



## SDR Report 2023

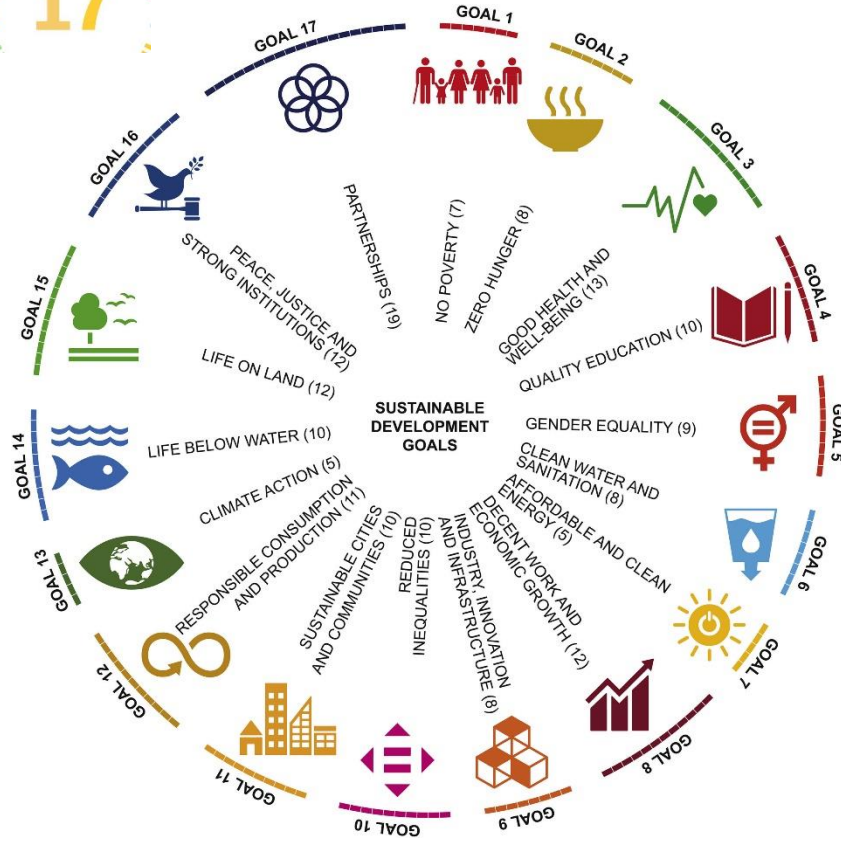


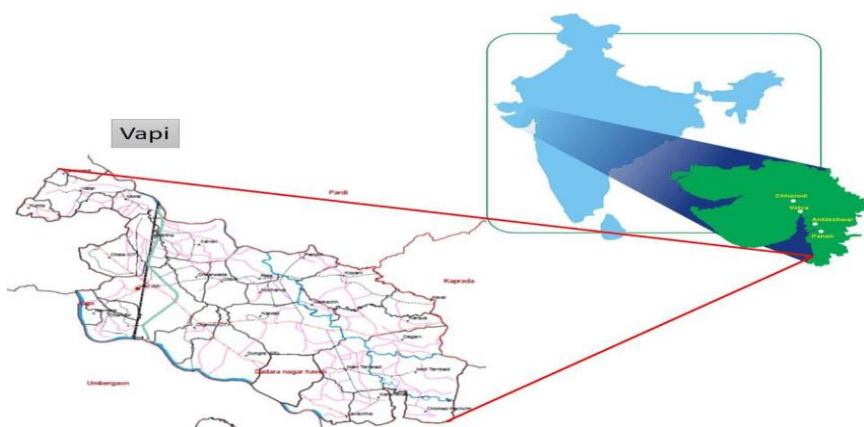
# SDGs

Sustainable  
Development  
Goals



## Sustainability Development Report 2023





### About Us:

Sarna Chemical Pvt. Ltd. is the name behind some of the world's most successful brands. We combine our knowledge, passion and entrepreneurial spirit to create, make and sell innovative ingredients that are relied on by industries and consumers around the world.

### Where we operate:

We operate globally with a balanced footprint across 2 sites, constituting global manufacturing, with local sales offices and innovation centers. Our footprint balances the need for efficient manufacturing operations with our desire to be close to customers. Our principal manufacturing sites are complemented that typically support our Fragrances and Flavors and Seed Enhancement businesses. All our locations have externally validated decarbonization roadmaps in place.

**India: 2 Manufacturing sites in Vapi, Gujarat**

**India: 1 Innovation Centre**

**India: 1 Sales office**

### Our Purpose:

We provide practical solutions to help address some of the world's biggest challenges. Our Purpose, Smart science to improve lives, underpins everything we do.

### Our Commitment:

We are committed to being the world's most sustainable supplier of innovative ingredients by becoming Climate, Land and People Positive by 2030. The United Nations Sustainability Development Goals (SDGs) underpin our approach.

### Founder of the company:

Founded by the first-generation technocrats four decades ago, we have grown steadily to become one of the leading players in the specialty chemicals segment specializing in benzene and toluene-based value chains. The changing geo-political scenario has opened up huge growth opportunities. Our purpose of 'Right Chemistry for Brighter Tomorrow' has been the guiding factor for carefully evaluating these opportunities to consolidate our efforts as a responsible organization.

Sustainability forms the core of everything we do at SCPL. Integrating the principles of sustainability in our strategy has provided us an opportunity to leverage our experience and learnings and streamline our efforts in building a robust and resilient business model. Our comprehensive strategy comprising elements of sustainability and excellence has enabled us to achieve sustained competitive advantage.



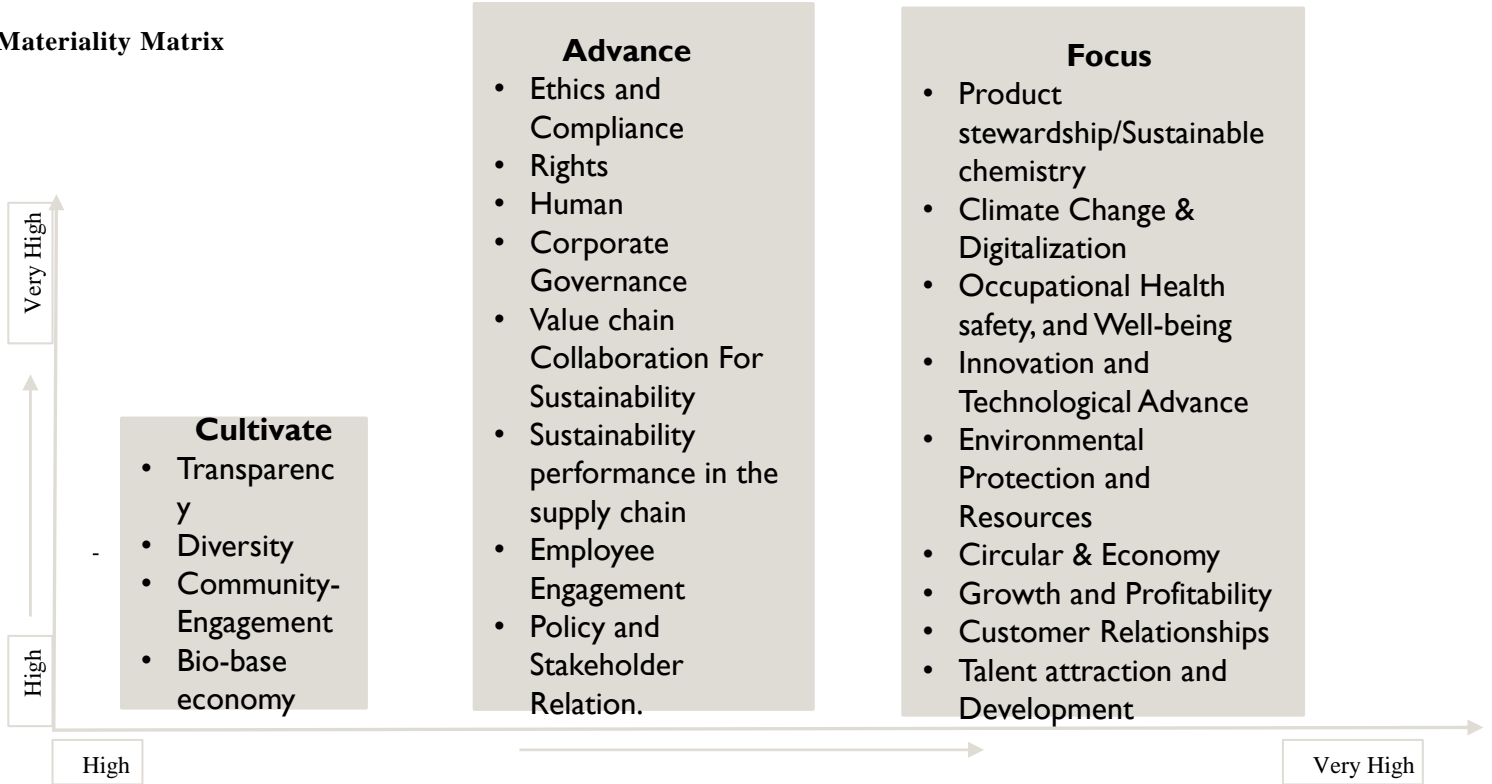
**Savinder Sarna**  
Chief Managing Director

Sustainable development is an organizing principle that aims to meet human development goals while also enabling natural systems to provide necessary natural resources and ecosystem services to humans. The desired result is a society where living conditions and resources meet human needs without undermining the planetary integrity and stability of the natural system. Sustainable development tries to find a balance between economic development, environmental protection, and social well-being. The Brundtland Report in 1987 defined sustainable development as "development that meets the needs of the present generation without compromising the ability of future generations to meet their own needs". The concept of sustainable

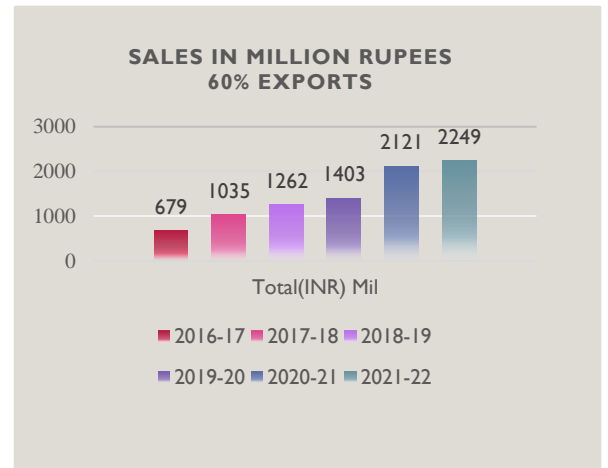
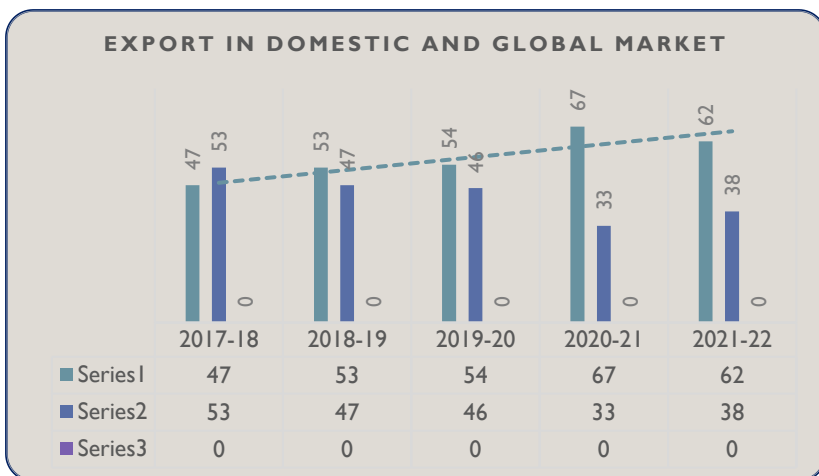
development nowadays has a focus on economic development, social development and environmental protection for future generations.

The SDR Report 2023 is integral to SRCPL corporate reporting suite, providing comprehensive insights into Clariant’s sustainable value creation. For each material topic in the »Focus« and »Advance« categories — as presented in the materiality matrix — SCPL outlines a management approach according to the GRI Standards, as well as the corresponding topic-specific GRI disclosures.

**Materiality Matrix**



**Our sustainable growth in market**





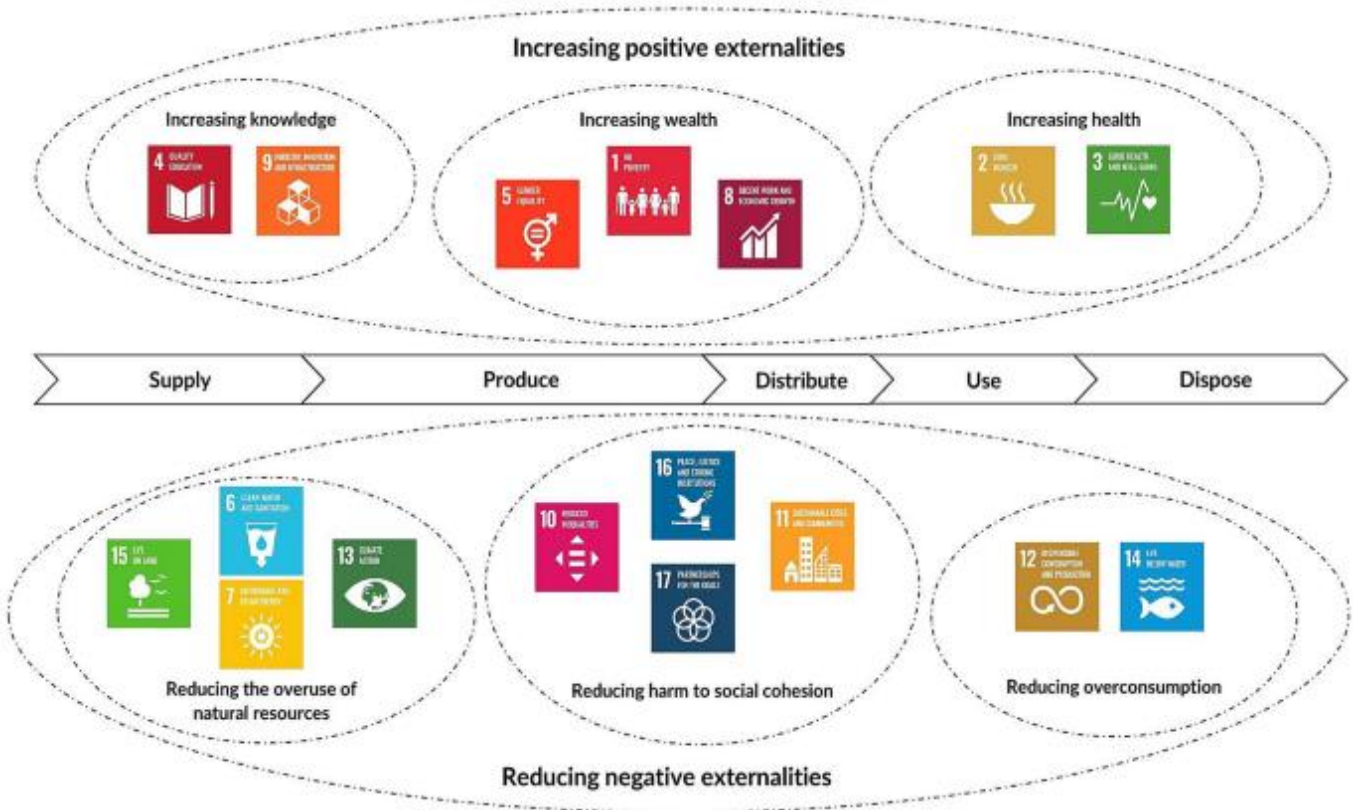
### Sustainable Growth and Development

In order to grow well and sustain in today’s dynamic, volatile, and capricious external environment, we have made great developments to instill traits of prudence, adaptability, and agility. These characteristics have enabled us to anticipate inherent challenges and impending transitions in the socio-economic landscape, minimizing the impact of adverse events and capitalizing on opportunities while demonstrating robust risk response and rapid recovery. Such flexibility not only gives us a competitive advantage, but it also contributes to our long-term sustainability accomplishments.

The last few years have been stimulating for everyone. The COVID-19 pandemic not only impacted health systems, but it also had a knock-on effect on the economy. We have persevered in the face of uncertainty, economic slowdown, and chaos by upholding our core values of Care, Integrity, and

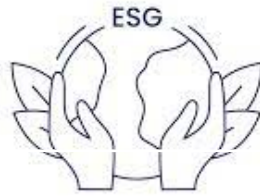
excellence. We are making sustained efforts to build the competency of our employees. Even during the course of the pandemic, we made continued efforts.

Development Program’ for new managers to aware them about environment, society and responsibility for reduction in green house gases. The intervention focuses on 5 critical competencies related to environment, human rights, work ethics and safety measures. They were identified through our sustainable economic growth. This is a regular program with weekly sessions. We follow corporate governance principles such as transparency, authentic communication, and ethical business conduct. These principles have enabled us in developing strong foundations and long-term strategic relationships with our stakeholders. We have been able to protect our business from external environmental risks by demonstrating our core value of Integrity.





**Environment**



**Highlights**



**Governance**



**Social**



Water recycled

**80%**

Lives Impacted through CSR initiatives

**10000**



New projects Commissioned

**3**



Reduction in carbon (Base Year 2021-2022)

**10 %**

Women in New hires

**6.2%**



Women at Board-Level

**18.75%**



Energy consumed from waste heat source

**6%**

Average Training per year

**2**



Net Profit 2023

**22.46 CR**



Medal in EcoVadis

**Bronze**

Fatality

**ZERO**



Total Revenue

**183.25 CR**



Quantity of hazardous waste recycled and reused

**100% Third party discharge**



Suppliers evaluated ESG

**38%**



Revenue (Specialty chemicals)

**183.25 CR**



We at all believe in working together to achieve business sustainability and adhere to a number of globally recognized standards and norms. We strive to provide the industry with exceptional leadership. Adherence to these standards supports us in ensuring the resilience of our operations, the quality of our products, and the long-term viability of our business. The following are the norms and standards that we adhere to:



**ISO 9001: 2015**



**ISO 45001:2018**



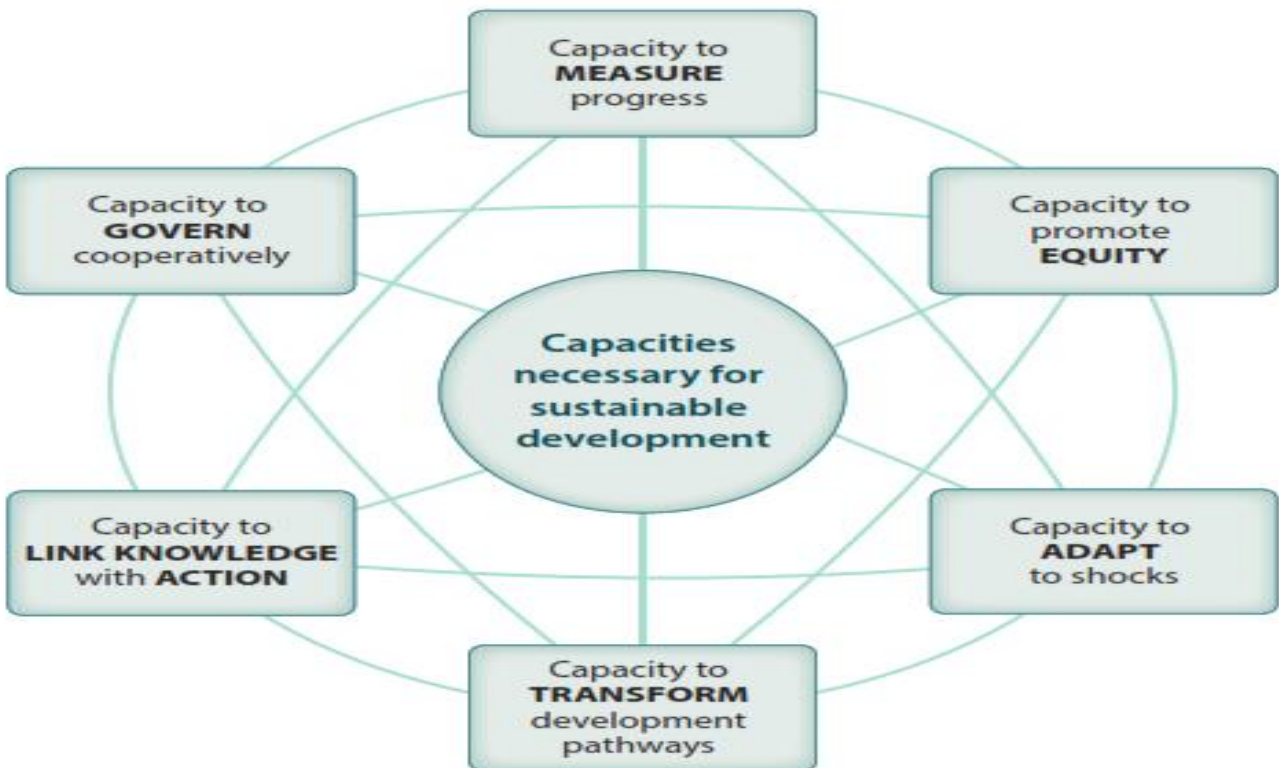
**ISO 27001:2018**



**ISO 14001: 2015**



**Bronze Medal**





Award To Director Dr. Mohit Rajani from Finance Minister Nirmala Sitharaman 2023



Membership of Organization







### Business Needs of the Company

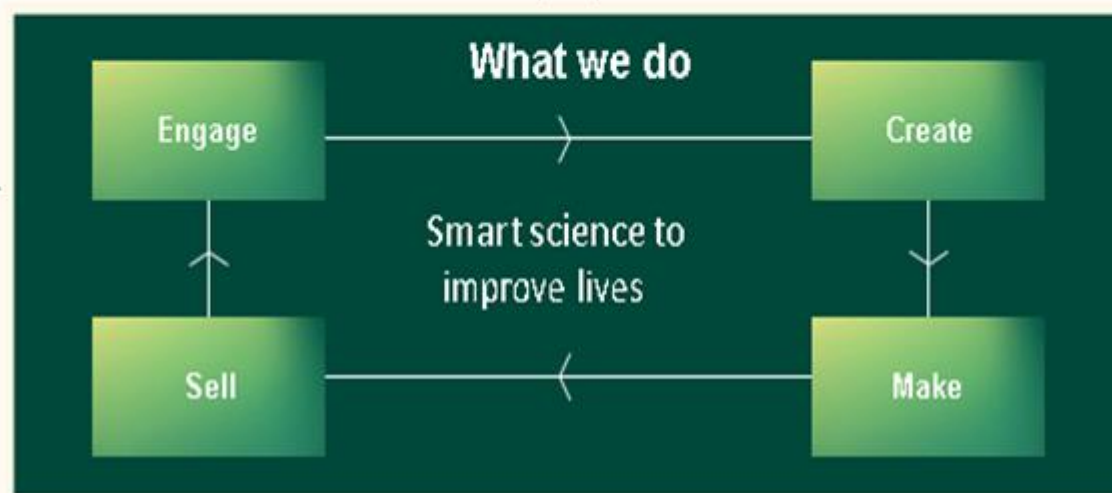
- Employees
- Raw materials
- Sites, assets and infrastructure
- Capital
- R&D
- Supply chain and logistics
- Energy Regulations

#### Our sustainability Commitment

- Climate Positive
- Land Positive
- People Positive
- Our approach to growth

#### Our competitive advantages

- 'One SCPL' culture
- Customer intimacy
- Innovation leadership
- Sustainability leadership



### The solutions we provides to Society

Fine Chemicals



Pharma API



Speciality Chemicals



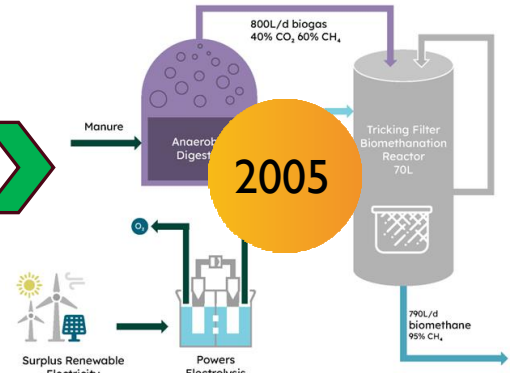
Our Journey Towards Sustainable Development



1988



2002

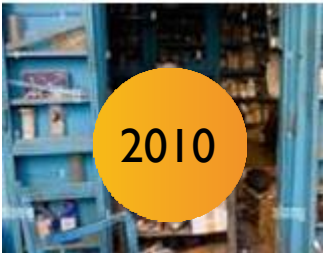


2005

Year 1988 by the UDCT Gold Medalist Mr. Savi S. Sarna

Set up the Plant-1 with large scale Production in Vapi

Unit -2 for Sulphonation, Reduction, Oxidation, F. C. Acyl/alkylation, Chlorination, Benzene (NCB) in Gujarat



2010



Sarna Life Sciences LLP trading firm acquired

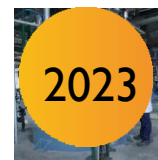
Established GHG accounting  
Achieved Ecovadis, Silver & Bronze medal  
Established Sustainability Council

ISO 9001, 14001 & OHSAS 18001, certification for all sites



Operationalized Sarna Research and Technology Centre Under construction Vapi

Upgraded Hydrogen Facility

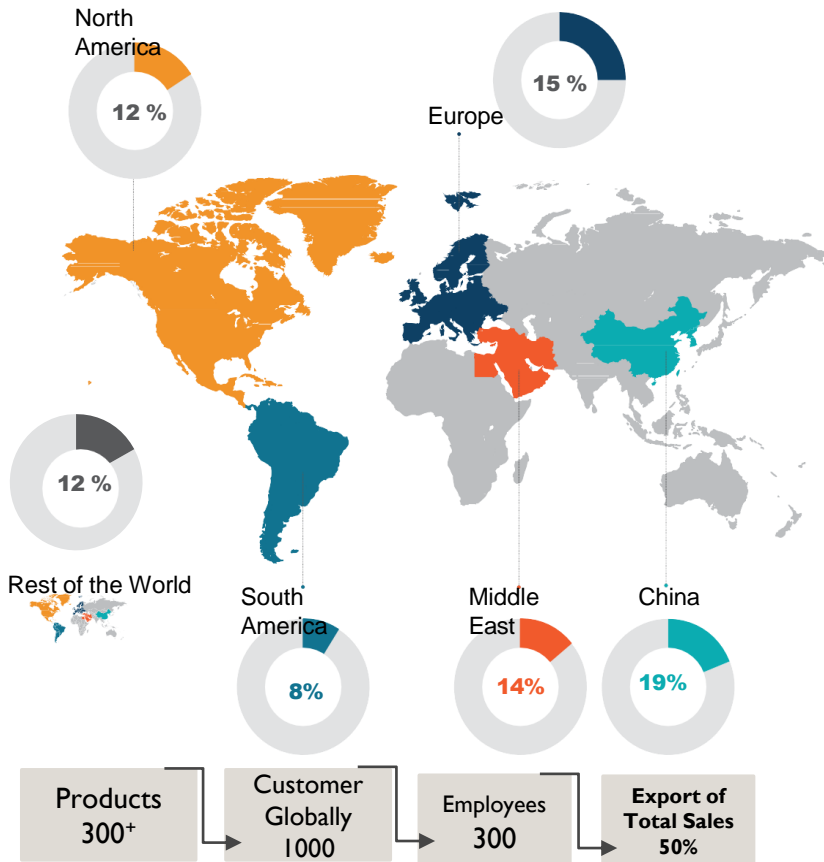


Received ISO 27001 certification for Technology office and Pilot plant

MVR facility made available

New R & D project under development





**Manufacturing Output**

During the reporting period, our total production increased by 17% on a year-on-year basis from 6,98,331 metric ton in FY 2022-23 to 8,02,002 metric ton in FY 2023-24.

**Shareholding Pattern**

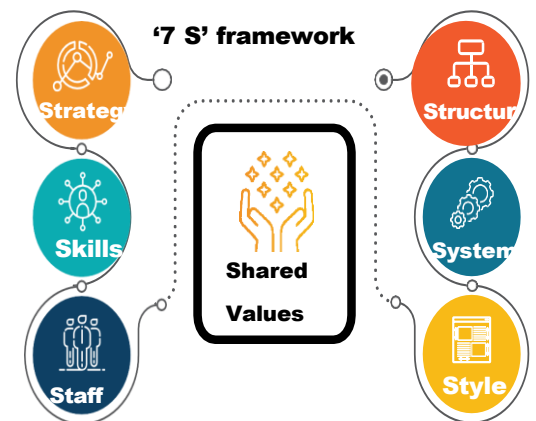
We are a promoter driven company founded by Shri Savinder Sarna, & Mohit Rajani. Legally, we are a Private limited company, listed on National Stock Exchange (NSE) and Bombay Stock Exchange (BSE) since 1992, under Group A category. As on 31st March 2022, our market capitalization was INR 550 Cr.

**Management System**

Our purpose, vision, mission and values effectively outline our commitments towards our stakeholders. To guide our actions in a responsible manner, we have adopted a '7S' framework which comprises Shared Values, Structure, Systems, Style, Strategy, Skills, and Staff. To execute our strategy effectively, we have adopted. Sarna Management System (AMS), an integrated. management system that caters to to the needs of all stakeholders effectively. AMS enables identification of associated risks with our products and processes and thereby adopts mitigation measures. We have defined strategic objectives of Sustainability, Reliability, Productivity, People Growth, and Company Growth under AMS.

**7 pillars of Sarna Management System**

Manufacturing Expansion Development Governance



### Financial capital



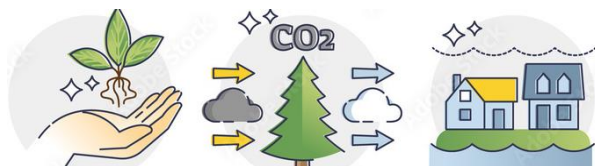
It refers to the funds available to create value through production, processes, or funds generated by our operations. These include equity, debt, retained earnings, internal accruals and investments, among others. We have a strong balance sheet and we focus on efficient capital allocation.

### Intellectual Capital



Through our R&D excellence, we develop products that are trusted by our clients and we invest in new technologies to create safer, smarter and simpler processes. Our intellectual capital encompasses our knowledge base and includes patents, trademarks, copyrights, technical know-how, formulations and innovative products and processes developed through R&D and other initiatives.

### Natural capital



This includes natural resources such as air, water, energy, land and biodiversity, which are either utilized by us or impacted by our operations. We aim to achieve “ Zero waste incineration” at most of our production facilities by optimizing the use of these resources, reducing energy emissions and consuming raw materials judiciously.

### Human Capital



We proudly trust and rely on the skills, capabilities, experience and dedication of our people to grow our business. We are committed to providing our employees an enabling and diverse work environment, which is both safe and caring. This promotes innovative thinking and motivates them to perform to the best of their abilities. Through trainings and the right development tools, we provide them opportunities to evolve and grow.

### Manufacturing capital



It pertains to our State-of-the-Art infrastructure for specialty chemical production, logistics, warehousing, and sales. We manufacture best-in-class products in these facilities, equipped with advanced infrastructure. We regularly upgrade the technology and focus on improving the sustainability aspects, reliability and productivity of our facilities.

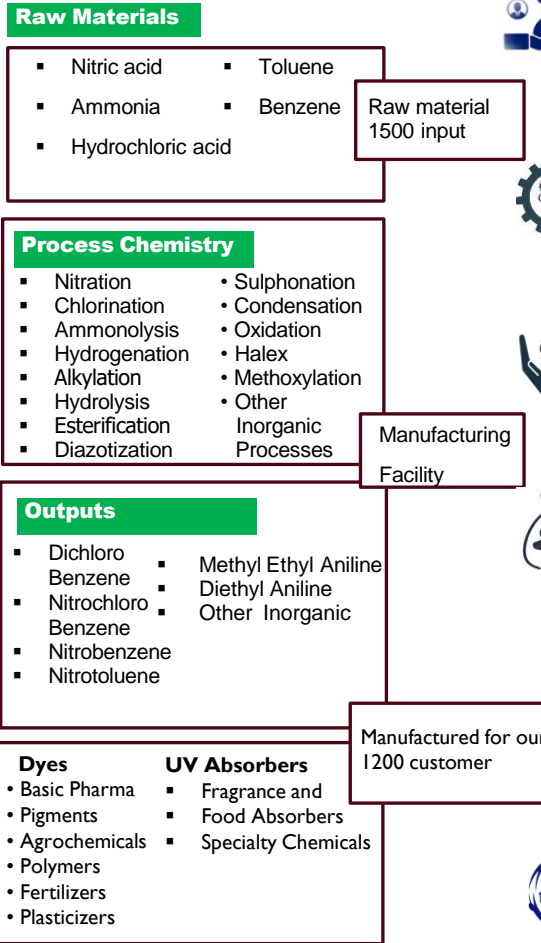
### Social capital



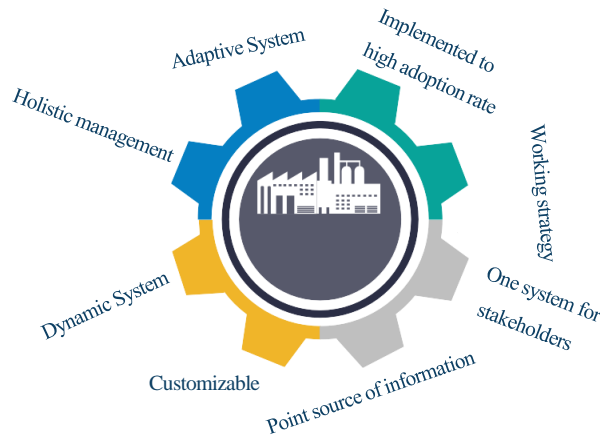
We have mutually beneficial relationships built on trust, with our key stakeholders such as investors, customers, vendors, society and government, among others, which play a vital role in our success. We are committed to creating a holistic value and driving inclusive development in our communities.

## Value Creation Approach

- Financial capital**
  - Total Equity capital – Rs. 3.21 Cr
  - Capex- INR 58 Cr
- Manufacturing capital**
  - No. of manufact. divisions: 2
- Intellectual Capital**
  - Number of R&D facilities - 2
  - Pilot plant-2
  - Spent on R & D – 20 Cr
  - R&D Team- 15
  - Technology Development team-10
- Human Capital**
  - Employees on roll : 100
  - Contract employees- 10
  - Number of women employees -25
  - New Hires - 05
  - Average training hours (per employee per year) - 100
  - Employee benefit expense -5 Cr
- Social capital**
  - Vendor Base- 200
  - MSME suppliers- 1000
  - %Suppliers evaluated for ESG by spent - 200
  - Customer Base- 200
  - CSR Investment – 2 Cr
- Natural capital**
  - Energy used 3.8 MW
  - Water withdrawal – 23867 KLH



- Financial capital**
  - Revenue- 183.25
  - Profit After Tax – 12.51
  - EBITDA – 30.95
  - 2 manufacturing facilities added
- Manufacturing capital**
  - Worldwide ranking:
    - Top 3 in Speciality chemical
    - Top 2 in Hydrogenation
  - Amongst global leadership position for speciality chemical
- Intellectual Capital**
  - Revenue- 00
  - Profit After Tax – 00
  - EBITDA – 00
  - 2 manufacturing facilities added
- Human Capital**
  - Gall up Employee Satisfaction
  - Survey Score: optimum
  - No. of employees benefitted through Internal Career
  - Development program – optimum
  - Employee Turnover Rate- optimum %
  - Lost Time Injury Frequency Rate (LTIFR) – 0.11
  - Fatalities- Zero
  - % Change in women
  - % employees-25
- Social capital**
  - Transition of high-risk supplier to low risk through engagement - 50
  - Customer Satisfaction - 93%
  - No. of lives benefitted -10004
- Natural Capital**
  - GHG emissions (Scope1 & Scope-2) – 7056 M tones CO<sub>2</sub>
  - Avoided Emissions-0.54 tonnes CO<sub>2</sub>
  - Waste sent to co-processing -3,431 MT
  - % Water recycled – 22%



## Leadership Competencies





**Environmental Performance Indicators**

We present the environmental performance indicators for the GHG emissions & reduction targets from year 2023-2026

Green House Gases MT Emissions 2023-2024 (Base Year)			Reduction plan of GHG
Type of Scope	Type of Scope	Metric ton	
CO2 e from scope 1	CO2 e from scope 1	5296.8422	Reduction Planned
CO2 e from scope 2	CO2 e from scope 2	2290	
CO2 e from scope 3	CO2 e from scope 3	3.749	
Total from scope 1+2+3		7590.5912	

Green House Gases MT Emissions 2024-25			Reduction by 10%
Type of Scope	Type of Scope	Metric ton	
CO2 e from scope 1	CO2 e from scope 1	4767.15798	Reduction by 10%
CO2 e from scope 2	CO2 e from scope 2	2061	
CO2 e from scope 3	CO2 e from scope 3	3.3741	
Total emission from scope 1 + 2 + 3		6831.53208	

Green House Gases MT Emissions 2025-2026			Reduction by 10%
Type of Scope	Type of Scope	Metric ton	
CO2 e from scope 1	CO2 e from scope 1	4290.442182	Reduction by 10%
CO2 e from scope 2	CO2 e from scope 2	1854.9	
CO2 e from scope 3	CO2 e from scope 3	3.03669	
Total emission from scope 1 + 2 + 3		6148.378872	

**Energy Consumption****Energy sources**

<b>Absolute in MWh</b>		<b>KWH / Kg/Gallon</b>
<b>Natural gas</b>		
2020	00	00
2021	00	00
2022	00	00
2023	00	00
<b>Electricity purchased (KWh)</b>		<b>KWH / Kg</b>
2020	2132145	0.047
2021	2243256	0.047
2022	2443554	0.045
2023	2396067	0.047
<b>Oil liquid</b>		<b>KWH / Kg/KL</b>
2020	00	0.003
2021	00	0.002
2022	00	0.003
2023	00	0.003
<b>Other energy sources 3 (Diesel KL)</b>		<b>KWH / Kg/KL</b>
2022	09	0.001
2023	10	0.001
<b>Energy from waste (produced internally)</b>		<b>KWH / Kg/KL</b>
2022	00	00
2023	00	00
<b>Solar energy and Hydropower</b>		<b>KWH / Kg/KL</b>
2022	00	00
2023	00	00



### Waste Key performance Indicator

#### Hazardous waste

Plant	Waste Water	2023-2024 (KL)	Jan 2024- Feb 2025 (KL)
Plant-1	Waste Water	528.17	44.91
Plant-2	Waste Water	1288.45	27.2
P1+P2	Waste Water	1816.62	72.11

Plant	Solid Waste	2023-2024 (MT)	Jan 2024- Feb 2025 (MT)
Plant-1	Sludge/Residue	767.225	197.89
Plant-2	Sludge/Residue	1204.75	201.44
P-1+P-2	Sludge/Residue	1971.97	399.33

Plant	Waste Water	2023-2024 (KL)	Jan 2024- Feb 2025 (KL)
Plant-1	Waste Water	528.17	5 % reduction
Plant-2	Waste Water	1288.45	5 % reduction
P1+P2	Waste Water	1816.62	5 % reduction

Plant	Solid Waste	2023-2024 (MT)	Jan 2024- Feb 2025 (MT)
Plant-1	Sludge/Residue	767.225	5 % reduction
Plant-2	Sludge/Residue	1204.75	5 % reduction
P-1+P-2	Sludge/Residue	1971.97	5% reduction



Plant 1: Hazardous waste 1 Jan 2023 to 31 Dec2023

Hazardous Waste : Plant I: 1 Jan 2023 to 29 Dec 2023				
Date	Manifest	Receiver/ Facility Name	Schedule-Category-WasteName	Waste Qty (MT)
28-12-2023	2321531	24763~Vapi Green Enviro Ltd.~GIDC SITE,PLOT NO.4807 Taluka :PAR Distict:VAL Pin no:3 I-26-26.1~Process Waste Sludge/Residues Containing Acid, Toxic Metals, Organic compounds ~ Sender PCI		6.91
28-12-2023	2321464	24763~Vapi Green Enviro Ltd.~GIDC SITE,PLOT NO.4807 Taluka :PAR Distict:VAL Pin no:3 I-26-26.1~Process Waste Sludge/Residues Containing Acid, Toxic Metals, Organic compounds ~ Sender PCI		5.77
22-12-2023	2315928	24763~Vapi Green Enviro Ltd.~GIDC SITE,PLOT NO.4807 Taluka :PAR Distict:VAL Pin no:3 I-26-26.1~Process Waste Sludge/Residues Containing Acid, Toxic Metals, Organic compounds ~ Sender PCI		8.35
21-12-2023	2314483	24763~Vapi Green Enviro Ltd.~GIDC SITE,PLOT NO.4807 Taluka :PAR Distict:VAL Pin no:3 I-26-26.1~Process Waste Sludge/Residues Containing Acid, Toxic Metals, Organic compounds ~ Sender PCI		8.35
19-12-2023	2312104	24763~Vapi Green Enviro Ltd.~GIDC SITE,PLOT NO.4807 Taluka :PAR Distict:VAL Pin no:3 I-26-26.1~Process Waste Sludge/Residues Containing Acid, Toxic Metals, Organic compounds ~ Sender PCI		8.3
16-12-2023	2309363	24763~Vapi Green Enviro Ltd.~GIDC SITE,PLOT NO.4807 Taluka :PAR Distict:VAL Pin no:3 I-26-26.1~Process Waste Sludge/Residues Containing Acid, Toxic Metals, Organic compounds ~ Sender PCI		8.4
15-12-2023	2308310	26076~M/s.Jai Shreenth Enterprise(old name:Jaiswal Scrap Traders)~Shed NO:C-1/B-61 I-33-33.11~Empty barrels/containers contaminated with hazardous chemicals /wastes~ ~ Sender PCB ID: :		0.58
14-12-2023	2307284	24763~Vapi Green Enviro Ltd.~GIDC SITE,PLOT NO.4807 Taluka :PAR Distict:VAL Pin no:3 I-26-26.1~Process Waste Sludge/Residues Containing Acid, Toxic Metals, Organic compounds ~ Sender PCI		6.76
12-12-2023	2305385	24763~Vapi Green Enviro Ltd.~GIDC SITE,PLOT NO.4807 Taluka :PAR Distict:VAL Pin no:3 I-26-26.1~Process Waste Sludge/Residues Containing Acid, Toxic Metals, Organic compounds ~ Sender PCI		5.79
12-12-2023	2305174	24763~Vapi Green Enviro Ltd.~GIDC SITE,PLOT NO.4807 Taluka :PAR Distict:VAL Pin no:3 I-26-26.1~Process Waste Sludge/Residues Containing Acid, Toxic Metals, Organic compounds ~ Sender PCI		7.99
11-12-2023	2304276	24763~Vapi Green Enviro Ltd.~GIDC SITE,PLOT NO.4807 Taluka :PAR Distict:VAL Pin no:3 I-26-26.1~Process Waste Sludge/Residues Containing Acid, Toxic Metals, Organic compounds ~ Sender PCI		7.92
11-12-2023	2304067	24763~Vapi Green Enviro Ltd.~GIDC SITE,PLOT NO.4807 Taluka :PAR Distict:VAL Pin no:3 I-26-26.1~Process Waste Sludge/Residues Containing Acid, Toxic Metals, Organic compounds ~ Sender PCI		6.1
09-12-2023	2302368	24763~Vapi Green Enviro Ltd.~GIDC SITE,PLOT NO.4807 Taluka :PAR Distict:VAL Pin no:3 I-26-26.1~Process Waste Sludge/Residues Containing Acid, Toxic Metals, Organic compounds ~ Sender PCI		6.11
08-12-2023	2291449	24763~Vapi Green Enviro Ltd.~GIDC SITE,PLOT NO.4807 Taluka :PAR Distict:VAL Pin no:3 I-26-26.1~Process Waste Sludge/Residues Containing Acid, Toxic Metals, Organic compounds ~ Sender PCI		6.69
06-12-2023	2289278	24763~Vapi Green Enviro Ltd.~GIDC SITE,PLOT NO.4807 Taluka :PAR Distict:VAL Pin no:3 I-26-26.1~Process Waste Sludge/Residues Containing Acid, Toxic Metals, Organic compounds ~ Sender PCI		5.72
02-12-2023	2285718	24763~Vapi Green Enviro Ltd.~GIDC SITE,PLOT NO.4807 Taluka :PAR Distict:VAL Pin no:3 I-26-26.1~Process Waste Sludge/Residues Containing Acid, Toxic Metals, Organic compounds ~ Sender PCI		5.41
02-12-2023	2285365	24763~Vapi Green Enviro Ltd.~GIDC SITE,PLOT NO.4807 Taluka :PAR Distict:VAL Pin no:3 I-26-26.1~Process Waste Sludge/Residues Containing Acid, Toxic Metals, Organic compounds ~ Sender PCI		5.36
21-11-2023	2254719	26076~M/s.Jai Shreenth Enterprise(old name:Jaiswal Scrap Traders)~Shed NO:C-1/B-61 I-33-33.11~Empty barrels/containers contaminated with hazardous chemicals /wastes~ ~ Sender PCB ID: :		0.44
16-11-2023	2251249	24763~Vapi Green Enviro Ltd.~GIDC SITE,PLOT NO.4807 Taluka :PAR Distict:VAL Pin no:3 I-26-26.1~Process Waste Sludge/Residues Containing Acid, Toxic Metals, Organic compounds ~ Sender PCI		6.17
11-11-2023	2249805	24763~Vapi Green Enviro Ltd.~GIDC SITE,PLOT NO.4807 Taluka :PAR Distict:VAL Pin no:3 I-26-26.1~Process Waste Sludge/Residues Containing Acid, Toxic Metals, Organic compounds ~ Sender PCI		5.51
03-11-2023	2241609	26076~M/s.Jai Shreenth Enterprise(old name:Jaiswal Scrap Traders)~Shed NO:C-1/B-61 I-33-33.11~Empty barrels/containers contaminated with hazardous chemicals /wastes~ ~ Sender PCB ID: :		0.69
28-10-2023	2235086	24763~Vapi Green Enviro Ltd.~GIDC SITE,PLOT NO.4807 Taluka :PAR Distict:VAL Pin no:3 I-35-35.3~Chemical sludge from waste water treatment ~ Sender PCB ID: 24340		5.51
04-10-2023	2214835	18108~Welspun India Ltd~VILL-VARSAMEDI,Anjar, Kutchn Taluka :ANJ Distict:KUT Pin no:II-B-15~Inorganic Acids (Spent Acids) ~ Sender PCB ID: 24340		27.12
03-10-2023	2213310	19323~Saurashtra Cement Ltd.,~VILL-ADITYANA,RANAVAV, DIST-PORBANDER Taluka :R/I-26-26.1~Process Waste Sludge/Residues Containing Acid, Toxic Metals, Organic compounds ~ Sender PCI		32.14
26-09-2023	2208350	19323~Saurashtra Cement Ltd.,~VILL-ADITYANA,RANAVAV, DIST-PORBANDER Taluka :R/I-26-26.1~Process Waste Sludge/Residues Containing Acid, Toxic Metals, Organic compounds ~ Sender PCI		31.66
15-09-2023	2200842	87390~M K Traders~Shed No. L-1107/12, 3rd Phase, GIDC Estate, Vapi, Taluka :PAR Distict:GSM Pin no:I-26-26.1~Process Waste Sludge/Residues Containing Acid, Toxic Metals, Organic compounds ~ Sender PCI		0.57
13-09-2023	2199087	87390~M K Traders~Shed No. L-1107/12, 3rd Phase, GIDC Estate, Vapi, Taluka :PAR Distict:GSM Pin no:I-26-26.1~Process Waste Sludge/Residues Containing Acid, Toxic Metals, Organic compounds ~ Sender PCI		0.89
05-09-2023	2193689	26076~M/s.Jai Shreenth Enterprise(old name:Jaiswal Scrap Traders)~Shed NO:C-1/B-61 I-33-33.11~Empty barrels/containers contaminated with hazardous chemicals /wastes~ ~ Sender PCB ID: :		0.68
04-09-2023	2192600	17228~Gujarat Siddhee Cement Ltd.~VILL-SIDHEEGAM, Taluka :SUT Distict:GSM Pin no:I-26-26.1~Process Waste Sludge/Residues Containing Acid, Toxic Metals, Organic compounds ~ Sender PCI		35.78
03-09-2023	2191979	17228~Gujarat Siddhee Cement Ltd.~VILL-SIDHEEGAM, Taluka :SUT Distict:GSM Pin no:I-26-26.1~Process Waste Sludge/Residues Containing Acid, Toxic Metals, Organic compounds ~ Sender PCI		37.61
11-08-2023	2165943	26076~M/s.Jai Shreenth Enterprise(old name:Jaiswal Scrap Traders)~Shed NO:C-1/B-61 I-33-33.11~Empty barrels/containers contaminated with hazardous chemicals /wastes~ ~ Sender PCB ID: :		0.54
09-08-2023	2164287	26076~M/s.Jai Shreenth Enterprise(old name:Jaiswal Scrap Traders)~Shed NO:C-1/B-61 I-33-33.11~Empty barrels/containers contaminated with hazardous chemicals /wastes~ ~ Sender PCB ID: :		0.84
02-08-2023	2159160	28203~Saurashtra Enviro Projects Pvt Ltd~VILLAGE- JUNA KATARIYA/ LAKADIYA, Taluka I-36-36.1~Any process or distillation residue ~ Sender PCB ID: 24340		11.38
31-05-2023	2112119	73802~Kataria Corporation ~Ground Floor, Shed No. C1-B-44, First Phase, GIDC Vapi -39(I)-33-33.11~Empty barrels/containers contaminated with hazardous chemicals /wastes~ ~ Sender PCB ID: :		0.74
15-05-2023	2096799	28203~Saurashtra Enviro Projects Pvt Ltd~VILLAGE- JUNA KATARIYA/ LAKADIYA, Taluka I-26-26.1~Process Waste Sludge/Residues Containing Acid, Toxic Metals, Organic compounds ~ Sender PCI		6.08
15-05-2023	2096497	17228~Gujarat Siddhee Cement Ltd.~VILL-SIDHEEGAM, Taluka :SUT Distict:GSM Pin no:I-26-26.1~Process Waste Sludge/Residues Containing Acid, Toxic Metals, Organic compounds ~ Sender PCI		42.33
10-05-2023	2092174	24763~Vapi Green Enviro Ltd.~GIDC SITE,PLOT NO.4807 Taluka :PAR Distict:VAL Pin no:3 I-26-26.1~Process Waste Sludge/Residues Containing Acid, Toxic Metals, Organic compounds ~ Sender PCI		7
26-04-2023	2077799	73802~Kataria Corporation ~Ground Floor, Shed No. C1-B-44, First Phase, GIDC Vapi -39(I)-33-33.13~liners~ ~ Sender PCB ID: 24340		0.61
13-04-2023	2063886	17228~Gujarat Siddhee Cement Ltd.~VILL-SIDHEEGAM, Taluka :SUT Distict:GSM Pin no:I-26-26.1~Process Waste Sludge/Residues Containing Acid, Toxic Metals, Organic compounds ~ Sender PCI		40.21
31-03-2023	2051731	24763~Vapi Green Enviro Ltd.~GIDC SITE,PLOT NO.4807 Taluka :PAR Distict:VAL Pin no:3 I-26-26.1~Process Waste Sludge/Residues Containing Acid, Toxic Metals, Organic compounds ~ Sender PCI		7.25
30-03-2023	2050843	73802~Kataria Corporation ~Ground Floor, Shed No. C1-B-44, First Phase, GIDC Vapi -39(I)-33-33.13~liners~ ~ Sender PCB ID: 24340		0.84
21-03-2023	2041727	24763~Vapi Green Enviro Ltd.~GIDC SITE,PLOT NO.4807 Taluka :PAR Distict:VAL Pin no:3 I-26-26.1~Process Waste Sludge/Residues Containing Acid, Toxic Metals, Organic compounds ~ Sender PCI		14.56
13-03-2023	2032985	24763~Vapi Green Enviro Ltd.~GIDC SITE,PLOT NO.4807 Taluka :PAR Distict:VAL Pin no:3 I-26-26.1~Process Waste Sludge/Residues Containing Acid, Toxic Metals, Organic compounds ~ Sender PCI		6.24
10-03-2023	2030871	24763~Vapi Green Enviro Ltd.~GIDC SITE,PLOT NO.4807 Taluka :PAR Distict:VAL Pin no:3 I-26-26.1~Process Waste Sludge/Residues Containing Acid, Toxic Metals, Organic compounds ~ Sender PCI		5.85
07-03-2023	2028693	24763~Vapi Green Enviro Ltd.~GIDC SITE,PLOT NO.4807 Taluka :PAR Distict:VAL Pin no:3 I-26-26.1~Process Waste Sludge/Residues Containing Acid, Toxic Metals, Organic compounds ~ Sender PCI		4.9
06-03-2023	2028362	24763~Vapi Green Enviro Ltd.~GIDC SITE,PLOT NO.4807 Taluka :PAR Distict:VAL Pin no:3 I-26-26.1~Process Waste Sludge/Residues Containing Acid, Toxic Metals, Organic compounds ~ Sender PCI		5.85
25-02-2023	1990527	24763~Vapi Green Enviro Ltd.~GIDC SITE,PLOT NO.4807 Taluka :PAR Distict:VAL Pin no:3 I-26-26.1~Process Waste Sludge/Residues Containing Acid, Toxic Metals, Organic compounds ~ Sender PCI		4.66
25-02-2023	1990352	24763~Vapi Green Enviro Ltd.~GIDC SITE,PLOT NO.4807 Taluka :PAR Distict:VAL Pin no:3 I-26-26.1~Process Waste Sludge/Residues Containing Acid, Toxic Metals, Organic compounds ~ Sender PCI		5.79
16-02-2023	1981030	24763~Vapi Green Enviro Ltd.~GIDC SITE,PLOT NO.4807 Taluka :PAR Distict:VAL Pin no:3 I-26-26.1~Process Waste Sludge/Residues Containing Acid, Toxic Metals, Organic compounds ~ Sender PCI		8.18
13-02-2023	1977945	24763~Vapi Green Enviro Ltd.~GIDC SITE,PLOT NO.4807 Taluka :PAR Distict:VAL Pin no:3 I-35-35.3~Chemical sludge from waste water treatment ~ Sender PCB ID: 24340		5.74
11-02-2023	1976142	24763~Vapi Green Enviro Ltd.~GIDC SITE,PLOT NO.4807 Taluka :PAR Distict:VAL Pin no:3 I-26-26.1~Process Waste Sludge/Residues Containing Acid, Toxic Metals, Organic compounds ~ Sender PCI		5.58
10-02-2023	1975125	24763~Vapi Green Enviro Ltd.~GIDC SITE,PLOT NO.4807 Taluka :PAR Distict:VAL Pin no:3 I-26-26.1~Process Waste Sludge/Residues Containing Acid, Toxic Metals, Organic compounds ~ Sender PCI		6.91
08-02-2023	1973350	24763~Vapi Green Enviro Ltd.~GIDC SITE,PLOT NO.4807 Taluka :PAR Distict:VAL Pin no:3 I-26-26.1~Process Waste Sludge/Residues Containing Acid, Toxic Metals, Organic compounds ~ Sender PCI		6.32
07-02-2023	1972195	24763~Vapi Green Enviro Ltd.~GIDC SITE,PLOT NO.4807 Taluka :PAR Distict:VAL Pin no:3 I-26-26.1~Process Waste Sludge/Residues Containing Acid, Toxic Metals, Organic compounds ~ Sender PCI		5.6
21-01-2023	1955710	24763~Vapi Green Enviro Ltd.~GIDC SITE,PLOT NO.4807 Taluka :PAR Distict:VAL Pin no:3 I-26-26.1~Process Waste Sludge/Residues Containing Acid, Toxic Metals, Organic compounds ~ Sender PCI		5.62
16-01-2023	1949965	24763~Vapi Green Enviro Ltd.~GIDC SITE,PLOT NO.4807 Taluka :PAR Distict:VAL Pin no:3 I-26-26.1~Process Waste Sludge/Residues Containing Acid, Toxic Metals, Organic compounds ~ Sender PCI		15.81
16-01-2023	1946995	24763~Vapi Green Enviro Ltd.~GIDC SITE,PLOT NO.4807 Taluka :PAR Distict:VAL Pin no:3 I-26-26.1~Process Waste Sludge/Residues Containing Acid, Toxic Metals, Organic compounds ~ Sender PCI		25.01
13-01-2023	1948754	24763~Vapi Green Enviro Ltd.~GIDC SITE,PLOT NO.4807 Taluka :PAR Distict:VAL Pin no:3 I-26-26.1~Process Waste Sludge/Residues Containing Acid, Toxic Metals, Organic compounds ~ Sender PCI		16.07
12-01-2023	1947727	24763~Vapi Green Enviro Ltd.~GIDC SITE,PLOT NO.4807 Taluka :PAR Distict:VAL Pin no:3 I-26-26.1~Process Waste Sludge/Residues Containing Acid, Toxic Metals, Organic compounds ~ Sender PCI		9.24
12-01-2023	1947488	24763~Vapi Green Enviro Ltd.~GIDC SITE,PLOT NO.4807 Taluka :PAR Distict:VAL Pin no:3 I-26-26.1~Process Waste Sludge/Residues Containing Acid, Toxic Metals, Organic compounds ~ Sender PCI		21.95
12-01-2023	1947200	24763~Vapi Green Enviro Ltd.~GIDC SITE,PLOT NO.4807 Taluka :PAR Distict:VAL Pin no:3 I-26-26.1~Process Waste Sludge/Residues Containing Acid, Toxic Metals, Organic compounds ~ Sender PCI		19.46
10-01-2023	1945524	24763~Vapi Green Enviro Ltd.~GIDC SITE,PLOT NO.4807 Taluka :PAR Distict:VAL Pin no:3 I-26-26.1~Process Waste Sludge/Residues Containing Acid, Toxic Metals, Organic compounds ~ Sender PCI		23.89
10-01-2023	1945041	24763~Vapi Green Enviro Ltd.~GIDC SITE,PLOT NO.4807 Taluka :PAR Distict:VAL Pin no:3 I-26-26.1~Process Waste Sludge/Residues Containing Acid, Toxic Metals, Organic compounds ~ Sender PCI		25.85
09-01-2023	1943980	73802~Kataria Corporation ~Ground Floor, Shed No. C1-B-44, First Phase, GIDC Vapi -39(I)-33-33.11~Empty barrels/containers contaminated with hazardous chemicals /wastes~ ~ Sender PCB ID: :		1.365
07-01-2023	1942964	24763~Vapi Green Enviro Ltd.~GIDC SITE,PLOT NO.4807 Taluka :PAR Distict:VAL Pin no:3 I-35-35.3~Chemical sludge from waste water treatment ~ Sender PCB ID: 24340		6.79
06-01-2023	1941993	24763~Vapi Green Enviro Ltd.~GIDC SITE,PLOT NO.4807 Taluka :PAR Distict:VAL Pin no:3 I-35-35.3~Chemical sludge from waste water treatment ~ Sender PCB ID: 24340		6.74
04-01-2023	1939941	24763~Vapi Green Enviro Ltd.~GIDC SITE,PLOT NO.4807 Taluka :PAR Distict:VAL Pin no:3 I-26-26.1~Process Waste Sludge/Residues Containing Acid, Toxic Metals, Organic compounds ~ Sender PCI		17.94
04-01-2023	1939732	24763~Vapi Green Enviro Ltd.~GIDC SITE,PLOT NO.4807 Taluka :PAR Distict:VAL Pin no:3 I-26-26.1~Process Waste Sludge/Residues Containing Acid, Toxic Metals, Organic compounds ~ Sender PCI		16.85
04-01-2023	1939476	24763~Vapi Green Enviro Ltd.~GIDC SITE,PLOT NO.4807 Taluka :PAR Distict:VAL Pin no:3 I-26-26.1~Process Waste Sludge/Residues Containing Acid, Toxic Metals, Organic compounds ~ Sender PCI		17.14
03-01-2023	1938782	24763~Vapi Green Enviro Ltd.~GIDC SITE,PLOT NO.4807 Taluka :PAR Distict:VAL Pin no:3 I-26-26.1~Process Waste Sludge/Residues Containing Acid, Toxic Metals, Organic compounds ~ Sender PCI		18.47
02-01-2023	1937666	24763~Vapi Green Enviro Ltd.~GIDC SITE,PLOT NO.4807 Taluka :PAR Distict:VAL Pin no:3 I-26-26.1~Process Waste Sludge/Residues Containing Acid, Toxic Metals, Organic compounds ~ Sender PCI		19.75
Hazardous Waste : Plant I: 1 Jan 2023 to 31 Dec 2023 in Metric Ton				767.225



## Plant 2: Hazardous waste 1 Jan 2024 to 12 Feb 2024

Hazardous Waste Material Plant-2							
Hazardous Waste Material Plant-2: 1 Jan 2024-12 Feb 2024							
Manifest ID	Receiver/ Facility Name	Schedule-Category-WasteName	Waste Qty	Is Accept	Is Recieve	Received (Freez	
2405477	26076~M/s.Jai Shreenath Enterprise(old name:Jaiswal Scrap Tr	I-33-33.11~Empty barrels/containers contaminated with	0.5	Yes	Yes	0.500MT	Freezed-10/02/2024
2401086	26076~M/s.Jai Shreenath Enterprise(old name:Jaiswal Scrap Tr	I-33-33.11~Empty barrels/containers contaminated with	0.5	Yes	Yes	0.500 MT	Freezed-06/02/2024
2371241	18108~Welspun India Ltd~VILL-VARSAMEDI,Anjar, Kutchh Talu	II-B-B15~Inorganic Acids (Spent Acids) ~ Sender PCB ID: :	28.82	Yes	Yes	28.820 MT	Freezed-27/01/2024
2371159	24763~Vapi Green Enviro Ltd.~GIDC SITE,PLOT NO.4807 Taluk	I-26-26.1~Process Waste Sludge/Residues Containing Ac	4.38	Yes	Yes	4.440 MT	Freezed-27/01/2024
2363188	24763~Vapi Green Enviro Ltd.~GIDC SITE,PLOT NO.4807 Taluk	I-26-26.1~Process Waste Sludge/Residues Containing Ac	17.8	Yes	Yes	18.190 MT	Freezed-19/01/2024
2362190	83105~NATIONAL TRADING COMPANY~Plot No. 121, Survey NI	I-33-33.11~Empty barrels/containers contaminated with	1.5	Yes	Yes	100.000 M	Freezed-18/01/2024
2360886	24763~Vapi Green Enviro Ltd.~GIDC SITE,PLOT NO.4807 Taluk	I-26-26.1~Process Waste Sludge/Residues Containing Ac	5.17	Yes	Yes	4.870MT	Freezed-17/01/2024
2360885	24763~Vapi Green Enviro Ltd.~GIDC SITE,PLOT NO.4807 Taluk	I-26-26.1~Process Waste Sludge/Residues Containing Ac	5.17	Yes	Yes	5.100 MT	Freezed-17/01/2024
2360871	24763~Vapi Green Enviro Ltd.~GIDC SITE,PLOT NO.4807 Taluk	I-26-26.1~Process Waste Sludge/Residues Containing Ac	4.81	Yes	Yes	4.870 MT	Freezed-17/01/2024
2359116	24763~Vapi Green Enviro Ltd.~GIDC SITE,PLOT NO.4807 Taluk	I-26-26.1~Process Waste Sludge/Residues Containing Ac	18.06	Yes	Yes	18.360 MT	Freezed-15/01/2024
2358924	24763~Vapi Green Enviro Ltd.~GIDC SITE,PLOT NO.4807 Taluk	I-26-26.1~Process Waste Sludge/Residues Containing Ac	15.69	Yes	Yes	15.560 MT	Freezed-15/01/2024
2357774	24763~Vapi Green Enviro Ltd.~GIDC SITE,PLOT NO.4807 Taluk	I-26-26.1~Process Waste Sludge/Residues Containing Ac	4.03	Yes	Yes	4.090 MT	Freezed-13/01/2024
2337001	24763~Vapi Green Enviro Ltd.~GIDC SITE,PLOT NO.4807 Taluk	I-26-26.1~Process Waste Sludge/Residues Containing Ac	4.69	Yes	Yes	4.620 MT	Freezed-12/01/2024
2334775	24763~Vapi Green Enviro Ltd.~GIDC SITE,PLOT NO.4807 Taluk	I-26-26.1~Process Waste Sludge/Residues Containing Ac	3.82	Yes	Yes	3.740 MT	Freezed-10/01/2024
2334456	24763~Vapi Green Enviro Ltd.~GIDC SITE,PLOT NO.4807 Taluk	I-26-26.1~Process Waste Sludge/Residues Containing Ac	4.82	Yes	Yes	4.960 MT	Freezed-10/01/2024
2333677	24763~Vapi Green Enviro Ltd.~GIDC SITE,PLOT NO.4807 Taluk	I-26-26.1~Process Waste Sludge/Residues Containing Ac	5.28	Yes	Yes	5.290 MT	Freezed-10/01/2024
2332312	24763~Vapi Green Enviro Ltd.~GIDC SITE,PLOT NO.4807 Taluk	I-26-26.1~Process Waste Sludge/Residues Containing Ac	4.73	Yes	Yes	4.680 MT	Freezed-08/01/2024
2330790	24763~Vapi Green Enviro Ltd.~GIDC SITE,PLOT NO.4807 Taluk	I-26-26.1~Process Waste Sludge/Residues Containing Ac	21.57	Yes	Yes	21.770 MT	Freezed-06/01/2024
2330608	24763~Vapi Green Enviro Ltd.~GIDC SITE,PLOT NO.4807 Taluk	I-26-26.1~Process Waste Sludge/Residues Containing Ac	17.1	Yes	Yes	17.840 MT	Freezed-06/01/2024
2329760	95038~Achintyaa Enviro Solutions Pvt Ltd~Plot No. 189, Shed N	I-26-26.1~Process Waste Sludge/Residues Containing Ac	11.03	Yes	Yes	11.030 MT	Freezed-05/01/2024
2329080	24763~Vapi Green Enviro Ltd.~GIDC SITE,PLOT NO.4807 Taluk	I-26-26.1~Process Waste Sludge/Residues Containing Ac	6.92	Yes	Yes	6.920 MT	Freezed-05/01/2024
2328744	95038~Achintyaa Enviro Solutions Pvt Ltd~Plot No. 189, Shed N	I-26-26.1~Process Waste Sludge/Residues Containing Ac	8.74	Yes	Yes	8.740 MT	Freezed-04/01/2024
2328562	24763~Vapi Green Enviro Ltd.~GIDC SITE,PLOT NO.4807 Taluk	I-26-26.1~Process Waste Sludge/Residues Containing Ac	6.31	Yes	Yes	6.260 MT	Freezed-04/01/2024
<b>Total Hazardous Waste Material Plant-2: 1 Jan 2024-12 Feb 2024 in Metric Ton</b>			<b>201.44</b>				



## Plant 2: Hazardous waste 1 Jan 2023 to 31 Dec 2023

Hazardous Waste Material Plant-2: 1 Jan 2023-31 Dec. 2024						
Manifest ID	Receiver/ Facility Name	Schedule-Category-WasteName	Waste Qty	Is Accept	Is Receive	Received (Freez
2324346	24763-Vapi Green Enviro Ltd.	"GIDC SITE,PLOT NO.4807 Taluki I-26-26.1"Process Waste Sludge/Residues Containing Ac	5.65	Yes	Yes	5.570 MT
2322624	24763-Vapi Green Enviro Ltd.	"GIDC SITE,PLOT NO.4807 Taluki I-26-26.1"Process Waste Sludge/Residues Containing Ac	7.14	Yes	Yes	7.110 MT
2321706	24763-Vapi Green Enviro Ltd.	"GIDC SITE,PLOT NO.4807 Taluki I-26-26.1"Process Waste Sludge/Residues Containing Ac	5.77	Yes	Yes	5.760 MT
2286699	26076-M/s.Jai Shreenth Enterprise(ol	name:Jaiswal Scrap Tr I-33-33.11"Empty barrels/containers contaminated with	0.7	Yes	Yes	0.700 MT
2285356	24763-Vapi Green Enviro Ltd.	"GIDC SITE,PLOT NO.4807 Taluki I-26-26.1"Process Waste Sludge/Residues Containing Ac	6.31	Yes	Yes	6.300 MT
2278430	24763-Vapi Green Enviro Ltd.	"GIDC SITE,PLOT NO.4807 Taluki I-26-26.1"Process Waste Sludge/Residues Containing Ac	17.95	Yes	Yes	17.970 MT
2276678	26076-M/s.Jai Shreenth Enterprise(ol	name:Jaiswal Scrap Tr I-33-33.11"Empty barrels/containers contaminated with	0.7	Yes	Yes	0.700 MT
2276178	24763-Vapi Green Enviro Ltd.	"GIDC SITE,PLOT NO.4807 Taluki I-26-26.1"Process Waste Sludge/Residues Containing Ac	5.93	Yes	Yes	5.930 MT
2276174	24763-Vapi Green Enviro Ltd.	"GIDC SITE,PLOT NO.4807 Taluki I-26-26.1"Process Waste Sludge/Residues Containing Ac	5.93	Yes	Yes	5.930 MT
2255351	24763-Vapi Green Enviro Ltd.	"GIDC SITE,PLOT NO.4807 Taluki I-26-26.1"Process Waste Sludge/Residues Containing Ac	7.18	Yes	Yes	7.040 MT
2254391	24763-Vapi Green Enviro Ltd.	"GIDC SITE,PLOT NO.4807 Taluki I-26-26.1"Process Waste Sludge/Residues Containing Ac	7.52	Yes	Yes	7.540 MT
2252917	24763-Vapi Green Enviro Ltd.	"GIDC SITE,PLOT NO.4807 Taluki I-26-26.1"Process Waste Sludge/Residues Containing Ac	6.92	Yes	Yes	6.960 MT
2252873	24763-Vapi Green Enviro Ltd.	"GIDC SITE,PLOT NO.4807 Taluki I-26-26.1"Process Waste Sludge/Residues Containing Ac	7.49	Yes	Yes	7.460 MT
2252790	24763-Vapi Green Enviro Ltd.	"GIDC SITE,PLOT NO.4807 Taluki I-26-26.1"Process Waste Sludge/Residues Containing Ac	19.38	Yes	Yes	19.320 MT
2252144	24763-Vapi Green Enviro Ltd.	"GIDC SITE,PLOT NO.4807 Taluki I-26-26.1"Process Waste Sludge/Residues Containing Ac	6.78	Yes	Yes	6.800 MT
2252081	24763-Vapi Green Enviro Ltd.	"GIDC SITE,PLOT NO.4807 Taluki I-26-26.1"Process Waste Sludge/Residues Containing Ac	19.28	Yes	Yes	19.290 MT
2251865	24763-Vapi Green Enviro Ltd.	"GIDC SITE,PLOT NO.4807 Taluki I-26-26.1"Process Waste Sludge/Residues Containing Ac	8.21	Yes	Yes	8.200 MT
2251707	24763-Vapi Green Enviro Ltd.	"GIDC SITE,PLOT NO.4807 Taluki I-26-26.1"Process Waste Sludge/Residues Containing Ac	17.03	Yes	Yes	17.040 MT
2251643	24763-Vapi Green Enviro Ltd.	"GIDC SITE,PLOT NO.4807 Taluki I-26-26.1"Process Waste Sludge/Residues Containing Ac	6.24	Yes	Yes	6.310 MT
2251554	24763-Vapi Green Enviro Ltd.	"GIDC SITE,PLOT NO.4807 Taluki I-26-26.1"Process Waste Sludge/Residues Containing Ac	19.47	Yes	Yes	19.510 MT
2251548	24763-Vapi Green Enviro Ltd.	"GIDC SITE,PLOT NO.4807 Taluki I-26-26.1"Process Waste Sludge/Residues Containing Ac	6.5	Yes	Yes	6.470 MT
2251478	24763-Vapi Green Enviro Ltd.	"GIDC SITE,PLOT NO.4807 Taluki I-35-35.3"Chemical sludge from waste water treatment	7.25	Yes	Yes	7.240 MT
2251255	24763-Vapi Green Enviro Ltd.	"GIDC SITE,PLOT NO.4807 Taluki I-26-26.1"Process Waste Sludge/Residues Containing Ac	7.3	Yes	Yes	7.300 MT
2249623	24763-Vapi Green Enviro Ltd.	"GIDC SITE,PLOT NO.4807 Taluki I-26-26.1"Process Waste Sludge/Residues Containing Ac	8.77	Yes	Yes	8.800 MT
2249246	24763-Vapi Green Enviro Ltd.	"GIDC SITE,PLOT NO.4807 Taluki I-26-26.1"Process Waste Sludge/Residues Containing Ac	6.9	Yes	Yes	6.890 MT
2248980	24763-Vapi Green Enviro Ltd.	"GIDC SITE,PLOT NO.4807 Taluki I-26-26.1"Process Waste Sludge/Residues Containing Ac	7.07	Yes	Yes	7.050 MT
2245188	26076-M/s.Jai Shreenth Enterprise(ol	name:Jaiswal Scrap Tr I-33-33.11"Empty barrels/containers contaminated with	0.4	Yes	Yes	0.400 MT
	83105-NATIONAL TRADING COMPANY"Plot No. 121, Survey N-33-33.11"Empty barrels/containers contaminated with		0.4	NO		Not Freeze
2242947	24763-Vapi Green Enviro Ltd.	"GIDC SITE,PLOT NO.4807 Taluki I-26-26.1"Process Waste Sludge/Residues Containing Ac	7.26	Yes	Yes	7.360 MT
2242803	24763-Vapi Green Enviro Ltd.	"GIDC SITE,PLOT NO.4807 Taluki I-26-26.1"Process Waste Sludge/Residues Containing Ac	6.4	Yes	Yes	6.350 MT
2242338	24763-Vapi Green Enviro Ltd.	"GIDC SITE,PLOT NO.4807 Taluki I-26-26.1"Process Waste Sludge/Residues Containing Ac	7.51	Yes	Yes	7.510 MT
2241813	24763-Vapi Green Enviro Ltd.	"GIDC SITE,PLOT NO.4807 Taluki I-26-26.1"Process Waste Sludge/Residues Containing Ac	6.48	Yes	Yes	6.500 MT
2241783	18108-Welspun India Ltd-VILL-VARSAMEDI,Anjar, Kutchh Talu II-B-B15-Inorganic Acids (Spent Acids) ~ Sender PCB ID :		31.59	Yes	Yes	31.590 MT
2240455	24763-Vapi Green Enviro Ltd.	"GIDC SITE,PLOT NO.4807 Taluki I-26-26.1"Process Waste Sludge/Residues Containing Ac	5.16	Yes	Yes	5.170 MT
2240311	24763-Vapi Green Enviro Ltd.	"GIDC SITE,PLOT NO.4807 Taluki I-26-26.1"Process Waste Sludge/Residues Containing Ac	7.52	Yes	Yes	7.510 MT
2240254	24763-Vapi Green Enviro Ltd.	"GIDC SITE,PLOT NO.4807 Taluki I-26-26.1"Process Waste Sludge/Residues Containing Ac	6.82	Yes	Yes	6.840 MT
2237435	24763-Vapi Green Enviro Ltd.	"GIDC SITE,PLOT NO.4807 Taluki I-26-26.1"Process Waste Sludge/Residues Containing Ac	6	Yes	Yes	6.130 MT
2216433	73802-Kataria Corporation "Ground Floor, Shed No. C1-B-44, I-33-33.11"Empty barrels/containers contaminated with		0.8	Yes	Yes	0.800 MT
2209415	26076-M/s.Jai Shreenth Enterprise(ol	name:Jaiswal Scrap Tr I-33-33.11"Empty barrels/containers contaminated with	0.3	Yes	Yes	0.300 MT
2209396	18108-Welspun India Ltd-VILL-VARSAMEDI,Anjar, Kutchh Talu II-B-B15-Inorganic Acids (Spent Acids) ~ Sender PCB ID :		31.72	Yes	Yes	31.720 MT
2194612	26076-M/s.Jai Shreenth Enterprise(ol	name:Jaiswal Scrap Tr I-33-33.11"Empty barrels/containers contaminated with	0.45	Yes	Yes	0.450 MT
2193826	18108-Welspun India Ltd-VILL-VARSAMEDI,Anjar, Kutchh Talu II-B-B15-Inorganic Acids (Spent Acids) ~ Sender PCB ID :		22.92	Yes	Yes	22.920 MT
2193303	26076-M/s.Jai Shreenth Enterprise(ol	name:Jaiswal Scrap Tr I-33-33.11"Empty barrels/containers contaminated with	1	Yes	Yes	1.000 MT
2182021	26076-M/s.Jai Shreenth Enterprise(ol	name:Jaiswal Scrap Tr I-33-33.11"Empty barrels/containers contaminated with	1.8	Yes	Yes	1.800 MT
2179659	69138-SHREE SAI INDUSTRIES"Plot No. 5/21, Opp. Fire Stator II-B-B15-Inorganic Acids (Spent Acids) ~ Sender PCB ID :		10.28	Yes	Yes	10.280 MT
2154842	69138-SHREE SAI INDUSTRIES"Plot No. 5/21, Opp. Fire Stator II-B-B15-Inorganic Acids (Spent Acids) ~ Sender PCB ID :		9.66	Yes	Yes	9.660 MT
2150334	69138-SHREE SAI INDUSTRIES"Plot No. 5/21, Opp. Fire Stator II-B-B15-Inorganic Acids (Spent Acids) ~ Sender PCB ID :		9.8	Yes	Yes	9.800 MT
2146205	69138-SHREE SAI INDUSTRIES"Plot No. 5/21, Opp. Fire Stator II-B-B15-Inorganic Acids (Spent Acids) ~ Sender PCB ID :		10.06	Yes	Yes	10.060 MT
2143959	69138-SHREE SAI INDUSTRIES"Plot No. 5/21, Opp. Fire Stator II-B-B15-Inorganic Acids (Spent Acids) ~ Sender PCB ID :		9.87	Yes	Yes	9.870 MT
2138587	73802-Kataria Corporation "Ground Floor, Shed No. C1-B-44, I-33-33.11"Empty barrels/containers contaminated with		1.17	Yes	Yes	1.170 MT
2137841	69138-SHREE SAI INDUSTRIES"Plot No. 5/21, Opp. Fire Stator II-B-B15-Inorganic Acids (Spent Acids) ~ Sender PCB ID :		9.8	Yes	Yes	9.800 MT
2131631	69138-SHREE SAI INDUSTRIES"Plot No. 5/21, Opp. Fire Stator II-B-B15-Inorganic Acids (Spent Acids) ~ Sender PCB ID :		12.52	Yes	Yes	12.520 MT
2124767	69138-SHREE SAI INDUSTRIES"Plot No. 5/21, Opp. Fire Stator I-26-26.3"Spent acid ~ Sender PCB ID : 24352		12.05	Yes	Yes	12.050 MT
2119372	73802-Kataria Corporation "Ground Floor, Shed No. C1-B-44, I-33-33.11"Empty barrels/containers contaminated with		1.04	Yes	Yes	1.040 MT
2116234	69138-SHREE SAI INDUSTRIES"Plot No. 5/21, Opp. Fire Stator I-26-26.3"Spent acid ~ Sender PCB ID : 24352		12.59	Yes	Yes	12.500 MT
2100248	24763-Vapi Green Enviro Ltd.	"GIDC SITE,PLOT NO.4807 Taluki I-26-26.1"Process Waste Sludge/Residues Containing Ac	21.94	Yes	Yes	21.960 MT
2099702	24763-Vapi Green Enviro Ltd.	"GIDC SITE,PLOT NO.4807 Taluki I-26-26.1"Process Waste Sludge/Residues Containing Ac	20.57	Yes	Yes	20.600 MT
2099187	24763-Vapi Green Enviro Ltd.	"GIDC SITE,PLOT NO.4807 Taluki I-26-26.1"Process Waste Sludge/Residues Containing Ac	6.5	Yes	Yes	6.530 MT
2099113	24763-Vapi Green Enviro Ltd.	"GIDC SITE,PLOT NO.4807 Taluki I-26-26.1"Process Waste Sludge/Residues Containing Ac	6.35	Yes	Yes	6.370 MT
2098120	24763-Vapi Green Enviro Ltd.	"GIDC SITE,PLOT NO.4807 Taluki I-26-26.1"Process Waste Sludge/Residues Containing Ac	19.76	Yes	Yes	19.800 MT
2097747	24763-Vapi Green Enviro Ltd.	"GIDC SITE,PLOT NO.4807 Taluki I-26-26.1"Process Waste Sludge/Residues Containing Ac	6.73	Yes	Yes	6.760 MT
2097571	24763-Vapi Green Enviro Ltd.	"GIDC SITE,PLOT NO.4807 Taluki I-26-26.1"Process Waste Sludge/Residues Containing Ac	21.61	Yes	Yes	21.680 MT
2097079	24763-Vapi Green Enviro Ltd.	"GIDC SITE,PLOT NO.4807 Taluki I-26-26.1"Process Waste Sludge/Residues Containing Ac	6.58	Yes	Yes	6.600 MT
2091761	31697-Visual Pharma Chem"GIDC Panoli, Taluka :ANK Distict:I-26-26.3"Spent acid ~ Sender PCB ID : 24352		28.76	Yes	Yes	28.760 MT
2087726	24763-Vapi Green Enviro Ltd.	"GIDC SITE,PLOT NO.4807 Taluki I-26-26.1"Process Waste Sludge/Residues Containing Ac	6.86	Yes	Yes	6.870 MT
2087380	24763-Vapi Green Enviro Ltd.	"GIDC SITE,PLOT NO.4807 Taluki I-26-26.1"Process Waste Sludge/Residues Containing Ac	7.37	Yes	Yes	7.380 MT
2086284	24763-Vapi Green Enviro Ltd.	"GIDC SITE,PLOT NO.4807 Taluki I-26-26.1"Process Waste Sludge/Residues Containing Ac	6.26	Yes	Yes	6.290 MT
2085915	69138-SHREE SAI INDUSTRIES"Plot No. 5/21, Opp. Fire Stator I-26-26.3"Spent acid ~ Sender PCB ID : 24352		12.07	Yes	Yes	12.000 MT
2084767	28203-Saurashtra Enviro Projects Pvt Ltd-VILLAGE- JUNA KAI I-26-26.1"Process Waste Sludge/Residues Containing Ac		7.44	Yes	Yes	7.440 MT
2079946	24763-Vapi Green Enviro Ltd.	"GIDC SITE,PLOT NO.4807 Taluki I-26-26.1"Process Waste Sludge/Residues Containing Ac	5.76	Yes	Yes	5.770 MT
2073489	69138-SHREE SAI INDUSTRIES"Plot No. 5/21, Opp. Fire Stator I-26-26.3"Spent acid ~ Sender PCB ID : 24352		10.27	Yes	Yes	10.200 MT
2061903	24763-Vapi Green Enviro Ltd.	"GIDC SITE,PLOT NO.4807 Taluki I-26-26.1"Process Waste Sludge/Residues Containing Ac	19.05	Yes	Yes	19.060 MT
2061068	24763-Vapi Green Enviro Ltd.	"GIDC SITE,PLOT NO.4807 Taluki I-26-26.1"Process Waste Sludge/Residues Containing Ac	5.07	Yes	Yes	5.150 MT
2060519	24763-Vapi Green Enviro Ltd.	"GIDC SITE,PLOT NO.4807 Taluki I-26-26.1"Process Waste Sludge/Residues Containing Ac	6.44	Yes	Yes	6.470 MT
2058298	24763-Vapi Green Enviro Ltd.	"GIDC SITE,PLOT NO.4807 Taluki I-26-26.1"Process Waste Sludge/Residues Containing Ac	4.69	Yes	Yes	4.740 MT
2055962	73802-Kataria Corporation "Ground Floor, Shed No. C1-B-44, I-33-33.11"Empty barrels/containers contaminated with		1.29	Yes	Yes	1.290 MT
2051826	24763-Vapi Green Enviro Ltd.	"GIDC SITE,PLOT NO.4807 Taluki I-26-26.1"Process Waste Sludge/Residues Containing Ac	6.06	Yes	Yes	6.100 MT
2044932	24763-Vapi Green Enviro Ltd.	"GIDC SITE,PLOT NO.4807 Taluki I-26-26.1"Process Waste Sludge/Residues Containing Ac	4.13	Yes	Yes	4.130 MT
2044537	24763-Vapi Green Enviro Ltd.	"GIDC SITE,PLOT NO.4807 Taluki I-26-26.1"Process Waste Sludge/Residues Containing Ac	6.62	Yes	Yes	6.630 MT
2042729	24763-Vapi Green Enviro Ltd.	"GIDC SITE,PLOT NO.4807 Taluki I-26-26.1"Process Waste Sludge/Residues Containing Ac	17.32	Yes	Yes	17.340 MT
2042290	24763-Vapi Green Enviro Ltd.	"GIDC SITE,PLOT NO.4807 Taluki I-26-26.1"Process Waste Sludge/Residues Containing Ac	16.75	Yes	Yes	16.790 MT
2041508	24763-Vapi Green Enviro Ltd.	"GIDC SITE,PLOT NO.4807 Taluki I-35-35.3"Chemical sludge from waste water treatment	19.94	Yes	Yes	20.040 MT
2014427	69138-SHREE SAI INDUSTRIES"Plot No. 5/21, Opp. Fire Stator I-26-26.3"Spent acid ~ Sender PCB ID : 24352		12.05	Yes	Yes	12.000 MT
1981969	69138-SHREE SAI INDUSTRIES"Plot No. 5/21, Opp. Fire Stator I-26-26.3"Spent acid ~ Sender PCB ID : 24352		12.03	Yes	Yes	12.000 MT
1980999	24763-Vapi Green Enviro Ltd.	"GIDC SITE,PLOT NO.4807 Taluki I-26-26.1"Process Waste Sludge/Residues Containing Ac	7.02	Yes	Yes	7.010 MT
1979343	24763-Vapi Green Enviro Ltd.	"GIDC SITE,PLOT NO.4807 Taluki I-26-26.1"Process Waste Sludge/Residues Containing Ac	2.23	Yes	Yes	2.2360 MT
1978745	24763-Vapi Green Enviro Ltd.	"GIDC SITE,PLOT NO.4807 Taluki I-26-26.1"Process Waste Sludge/Residues Containing Ac	18.32	Yes	Yes	18.380 MT
1975246	69138-SHREE SAI INDUSTRIES"Plot No. 5/21, Opp. Fire Stator I-26-26.3"Spent acid ~ Sender PCB ID : 24352		12.54	Yes	Yes	12.500 MT
1966871	69138-SHREE SAI INDUSTRIES"Plot No. 5/21, Opp. Fire Stator I-26-26.3"Spent acid ~ Sender PCB ID : 24352		9.99	Yes	Yes	9.900 MT
1965819	24763-Vapi Green Enviro Ltd.	"GIDC SITE,PLOT NO.4807 Taluki I-26-26.1"Process Waste Sludge/Residues Containing Ac	19.16	Yes	Yes	19.850 MT
1957744	24763-Vapi Green Enviro Ltd.	"GIDC SITE,PLOT NO.4807 Taluki I-26-26.1"Process Waste Sludge/Residues Containing Ac	14.11	Yes	Yes	14.290 MT
1957572	24763-Vapi Green Enviro Ltd.	"GIDC SITE,PLOT NO.4807 Taluki I-26-26.1"Process Waste Sludge/Residues Containing Ac	18.92	Yes	Yes	18.650 MT
1957016	24763-Vapi Green Enviro Ltd.	"GIDC SITE,PLOT NO.4807 Taluki I-26-26.1"Process Waste Sludge/Residues Containing Ac	20.37	Yes	Yes	20.320 MT
1954878	24763-Vapi Green Enviro Ltd.	"GIDC SITE,PLOT NO.4807 Taluki I-26-26.1"Process Waste Sludge/Residues Containing Ac	24.39	Yes	Yes	24.420 MT
1953469	24763-Vapi Green Enviro Ltd.	"GIDC SITE,PLOT NO.4807 Taluki I-26-26.1"Process Waste Sludge/Residues Containing Ac	14.74	Yes	Yes	14.740 MT
1953258	69138-SHREE SAI INDUSTRIES"Plot No. 5/21, Opp. Fire Stator I-26-26.3"Spent acid ~ Sender PCB ID : 24352		9.2	Yes	Yes	9.200 MT
1952733	24763-Vapi Green Enviro Ltd.	"GIDC SITE,PLOT NO.4807 Taluki I-26-26.1"Process Waste Sludge/Residues Containing Ac	19.83	Yes	Yes	19.820 MT
1952271	24763-Vapi Green Enviro Ltd.	"GIDC SITE,PLOT NO.4807 Taluki I-26-26.1"Process Waste Sludge/Residues Containing Ac	20.17	Yes	Yes	19.980 MT
1952133	73802-Kataria Corporation "Ground Floor, Shed No. C1-B-44, I-33-33.11"Empty barrels/containers contaminated with		1.02	Yes	Yes	1.020 MT
1951674	24763-Vapi Green Enviro Ltd.	"GIDC SITE,PLOT NO.4807 Taluki I-26-26.1"Process Waste Sludge/Residues Containing Ac	17	Yes	Yes	17.030 MT
1951339	24763-Vapi Green Enviro Ltd.	"GIDC SITE,PLOT NO.4807 Taluki I-26-26.1"Process Waste Sludge/Residues Containing Ac	18.47	Yes	Yes	18.600 MT
1950956	24763-Vapi Green Enviro Ltd.	"GIDC SITE,PLOT NO.4807 Taluki I-26-26.1"Process Waste Sludge/Residues Containing Ac	17.32	Yes	Yes	17.450 MT
1950330	24763-Vapi Green Enviro Ltd.	"GIDC SITE,PLOT NO.4807 Taluki I-26-26.1"Process Waste Sludge/Residues Containing Ac	15.7	Yes	Yes	15.750 MT
1949823	24763-Vapi Green Enviro Ltd.	"GIDC SITE,PLOT NO.4807 Taluki I-26-26.1"Process Waste Sludge/Residues Containing Ac	16.55	Yes	Yes	16.450 MT
1947753	69138-SHREE SAI INDUSTRIES"Plot No. 5/21, Opp. Fire Stator I-26-26.3"Spent acid ~ Sender PCB ID : 24352		15.35	Yes	Yes	15.350 MT
1947718	24763-Vapi Green Enviro Ltd.	"GIDC SITE,PLOT NO.4807 Taluki I-26-26.1"Process Waste Sludge/Residues Containing Ac	17.88	Yes	Yes	17.900 MT
1939981	69138-SHREE SAI INDUSTRIES"Plot No. 5/21, Opp. Fire Stator I-26-26.3"Spent acid ~ Sender PCB ID : 24352		13.59	Yes	Yes	13.580 MT
1938485	24763-Vapi Green Enviro Ltd.	"GIDC SITE,PLOT NO.4807 Taluki I-26-26.1"Process Waste Sludge/Residues Containing Ac	19.97	Yes	Yes	19.960 MT
1937165	24763-Vapi Green Enviro Ltd.	"GIDC SITE,PLOT NO.4807 Taluki I-26-26.1"Process Waste Sludge/Residues Containing Ac	19.9	Yes	Yes	19.820 MT





**Non-hazardous waste**

Sr. No.	Waste Type	Year	Metric Ton
1	Non Hazardous	2021	40
2	Non Hazardous	2022	45
3	Non Hazardous	2023	53
Sr. No.	Waste Recycled	Year	Metric Ton
1	Water	2023	12
2	Oil	2023	0.1
3	Solvents	2023	35
4	HCl	2023	5

**Water Consumption**

Sr. No.	Water Consumption	Year	KL
1	GIDC Water	2021	40
2	Ground Water	2022	45
3	Surface Water	2023	53
Sr. No.	Waste Recycled	Year	KL
1	Waste water	2021	12
2	Waste water	2022	0.1
3	Waste water	2023	35



### Safety Performance Indicators

The following figures include both regular employees at Sarna Chemicals and contract workers managed by Sarna Chemicals.

**WAI 1** (Number of reported occupational accidents with lost worktime of one day or more per million working hours)

2020		2.8
2021		1.8
2022		2.1
2023	Target 2023: 2.3	2.5

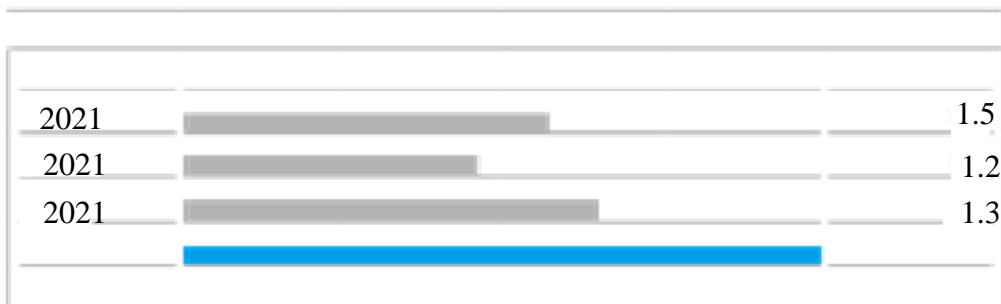
**WAI 2** (number of reported occupational accidents with lost work time of more than three days per million working hours)

2020		2.1
2021		1.0
2022		1.5
2023	Target 2023: 1.5	2.0

**WAI 3** (Number of lost work days due to reported occupational accidents per million working hrs.)

2020		34.8
2021		19.5
2022		25.2
2023	Target 2023: 28.0	23.1

#### Number of incidents according to Process Safety Incident (PSI)



#### Number of incidents in absolute terms

2020	2		16	
2021	1	12		
2022	1		18	
2023	1			29
	Fire	Release of chemicals		



**Work-related Safety Key Performance Indicators Overall**

	2023
Number of reported occupational accidents per million working hours	3.9
Number of reported occupational accidents	45

**Causes of injuries**

2023	
Most important causes of injuries in %	
Contact with stationary object	19
Mechanical influences	15
Stumbling, falling, slipping	12
Contact with chemicals	12
Contact with sharp-edged surfaces	10
Contact with vehicle / moving machine	10
Burns / Scalding	8
Contact with moving machinery	8

There were no fatalities due to work-related injuries and no work-related injuries with serious consequences among employees during the reporting period. Due to legal restrictions in some countries, work-related illnesses are not systematically recorded. In 2023, we had no fatalities due to work-related illnesses and no work-related illnesses were known. In the group of contractors, there were seven accidents with lost work time during the reporting period (three cut injuries, two accidents due to contact with a vehicle, one tripping accident, and one electrocution). There were no accidents resulting in a fatality





The figures in the following two tables and on the next page relate to a total of **491** employees (“Headcount”) as of December 31, 2023.

### New employees

	Number	%
<b>Age group</b>		
under 30 years old	300	61
30 to 50 years old	100	20
over 50 years old	91	19
<b>Total</b>	<b>491</b>	<b>100.0</b>

### Share of Women in Management Position

	Year
<b>in %</b>	<b>2023</b>
2021	007
	010
2022	012
2023	012

### Staff turnover

		2023
<b>Age Group</b>	<b>Number</b>	<b>%</b>
under 30 years old	1200000	22
30 to 50 years old	1800000	33
over 50 years old	2400000	44
<b>Total</b>	<b>5400000</b>	<b>100.0</b>

### Share of women

	2023
<b>in %</b>	<b>Number</b>
Employees	20
Management positions	2
Executive Management Team	5
Supervisory Board	13

### New Employment

		2023
<b>Gender</b>	<b>Number</b>	<b>%</b>
Male	473	74.8
Female	18	25.2
<b>Total</b>	<b>491</b>	<b>100.0</b>

### Staff turnover

Gender	Number	%
Male	4000000	74
Female	1400000	25
<b>Total</b>	<b>5400000</b>	<b>100.0</b>



Employees with a permanent employment contract

2023		
	Number	%
Gender		
Male	265	73.2
Female	018	26.8
Total	283	100.0

Employees with a fixed-term employment contract

2023			
	Number	%	
Gender			
Male	100	100	
Female	000	00	
Total	100	100.0	

Employees hired full-time

			2023
	Number		%
Gender			
Male	473		96
Female	018		4
Total	491		100.0

Employees hired part-time

			2023
	Number		%
Gender			
Male	00		00
Female	00		00
Total	00		00

## Business Strategy and Governance

We, at all, embed the highest standards of corporate governance in our business operations, with prime focus on managing our affairs in a fair and transparent manner. Our robust corporate governance mechanism is driven through our policies, governance philosophy, and corporate codes, which is in accordance with evolving laws and regulations. It underpins our sustained success by fostering responsible growth. Guided by SCPL's core value system: Care, Integrity, and Excellence, our corporate governance enables us to make informed decisions.

For achieving sustainable growth through our business operations, compliance with applicable rules and regulations, codes, guidelines, and policies is crucial for us. Our policies and codes act as guiding forces and drive our business conduct and norms of behavior. Our governance policies guide us on proactive compliance with labor practices and standards, environmental health and safety, board diversity and independent directors, reporting and contact persons, disciplinary action, and compliance with the code.



We have an unwavering focus towards ethical business conduct. We adhere to the best industry practices, global and national guidelines, and statutory mandates on ethical business conduct. We have developed and adopted whistle-blower protection policy to promote reporting on unethical and unlawful behavior even on an anonymous basis. We have established an Ethics Committee consisting of Executive Director, CHRO, CMO, CFO and CS. The Chief Human Resource Officer (CHRO) has been appointed as Ethics Officer for SCPL. This committee has been entrusted with responsibility to investigate all complaints and recommend actions.

All our Board members and employees have received anti-corruption and anti-competitive behavior training in FY 2021-22. We transparently disclose any such violations in our sustainability report so as to communicate to all stakeholders. During FY 2021-22, there has been no case reported for anti-competitive practices and conflict of interest, however there has been one case of corruption reported against one of our employees. We have thoroughly investigated this incident and implemented corrective measures accordingly.



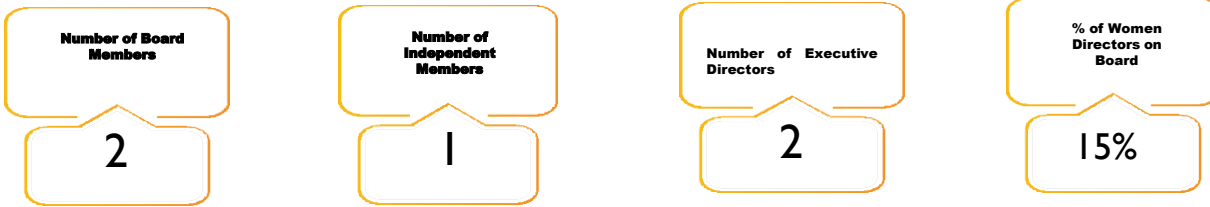
A crucial factor for the success of organization is its corporate governance. We believe that a good corporate governance lays down the framework for building robust relationships amongst various stakeholders of the organization. Our enhanced focus on building good corporate governance is by creating an environment of trust through transparency and accountability which leads to fostering long-term investment, financial stability, and business integrity, thereby supporting resilient, sustained, and inclusive growth. We are committed to create value for all our stakeholders, maximize our positive impact, and eliminate adverse direct and indirect impacts. Our robust corporate governance model will play a defining role in this endeavor.

**Savinder Sarna, CMD**



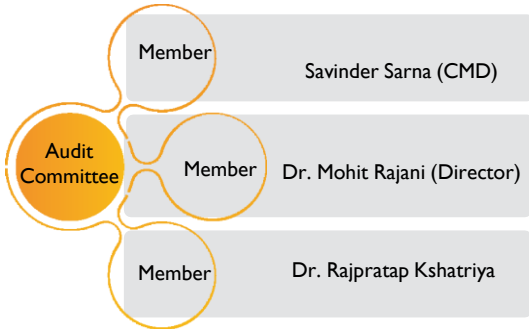
The Board of Directors of SCPL conforms with the Listing regulations, 2015 and the Companies Act, 2013. Our Board comprises sixteen (16) members consisting of eight (8) Executive Directors, and eight (8) Independent Directors. Independent Directors are appointed for a period of three years initially, which can be extended for another term of five years in case of re-appointment. Tenure of Managing Director is five years. We have 3 women directors in our Board which is higher than the statutory requirement. For efficient and effective

Board Committees

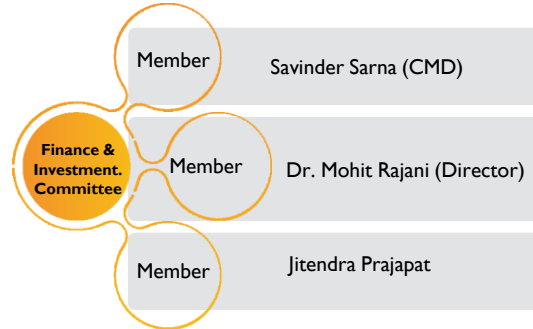


Board Committees

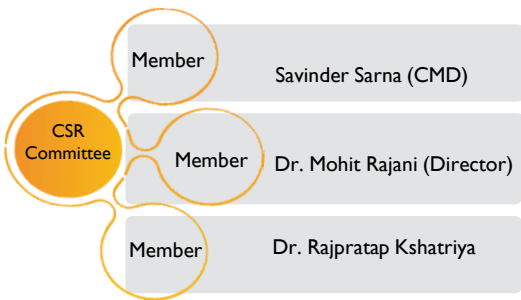
1. Audit Committees



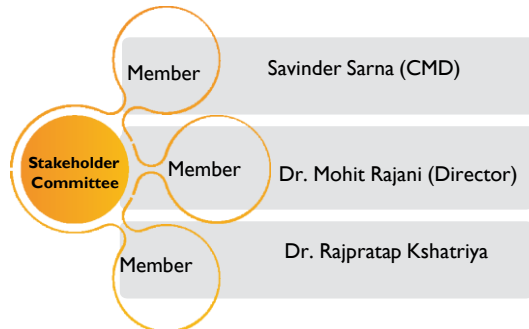
4. Finance & Investment Committees



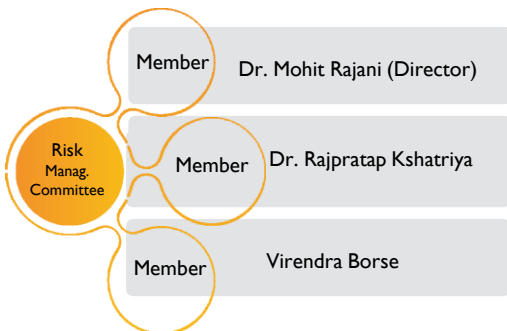
2. CSR Committees



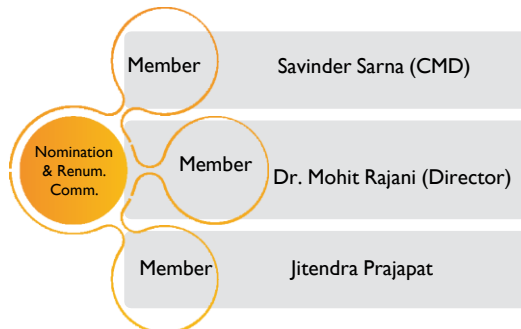
5. Stakeholders Committee



3. Risk Management Committees



6. Nomination and Remuneration Committee



## Board Performance Management

Pursuant to the provisions of the Companies Act, 2013 and the SEBI Listing Regulations, the Board and its committees are evaluated annually. The Directors are required to provide their feedback on overall functioning of the Board, Board Committees and contribution by individual Directors. As a part of the evaluation process, a structured questionnaire is used by the Directors for suggestions in areas of improvement to increase management and operational performance. The questionnaire entails parameters such as Board/ Committee Structure, Board Meeting Practices, Board Effectiveness, Participation by Board Members in the meetings. At SCPL's we believe in nurturing and growth of our people with continuous focus on learning and development. We organize workshops for our Board members, focusing on areas like ethical business practices, responsible and sustainable development, corporate social responsibility, and corporate governance. During the reporting period, 4 workshops were conducted for the Board's capacity building.

SCPL's remuneration policy, developed by the Nomination and Remuneration Committee (NRC), is adopted for selection and appointment of Directors and senior leadership team and their remuneration. Selection criteria for directors include academic qualification, sectoral and functional expertise, integrity and probity in public life, and potential to provide strategic directions to the organization. We also provide those charged with governance with a statement that we have complied with relevant ethical requirements regarding independence. All of our independent directors are certified and listed on Independent Directors Databank (IDDB). Various factors like individual and company performance, annual targets, and compensation market trend in the industry are considered for deciding on remuneration. At SCPL's we have linked the ESG performance and incentives for our Board. Our median employee's compensation increased by 110.12% in FY 2021-22 in comparison to FY 2020-21, however the ratio between the total annual compensation of the Chairman and Managing Director and the mean or median employee compensation has increased from 158 during FY 2020-21 to 166 during FY 2021-22. During the covid period, remuneration of CMD was reduced substantially which was reinstated in the post covid phase, which resulted in the increase of this ratio.

### Sustainability Council

At SCPL, to guide and help the Board achieve its sustainability goals, a highest decision making council, i.e., Sustainability Council has been established. The role of Sustainability Council is to define & design a strategic action plan to meet our goals & targets. The uniqueness of this council is the amalgamation of cross functional teams which brings a diversified perspective to achieve sustainable growth through resilience. It is led by Chairman and has key representatives from the Board, executive, and senior leadership family from all the zones.

#### Responsibilities of the council



To advise the Board on applicable and upcoming national and international laws, regulations and standards

To advise the board regarding implementation of Sustainability Management System and assessment & management of risks and opportunities.

To outline initiatives and develop strategy needed to institutionalize a culture of sustainability throughout the organisation

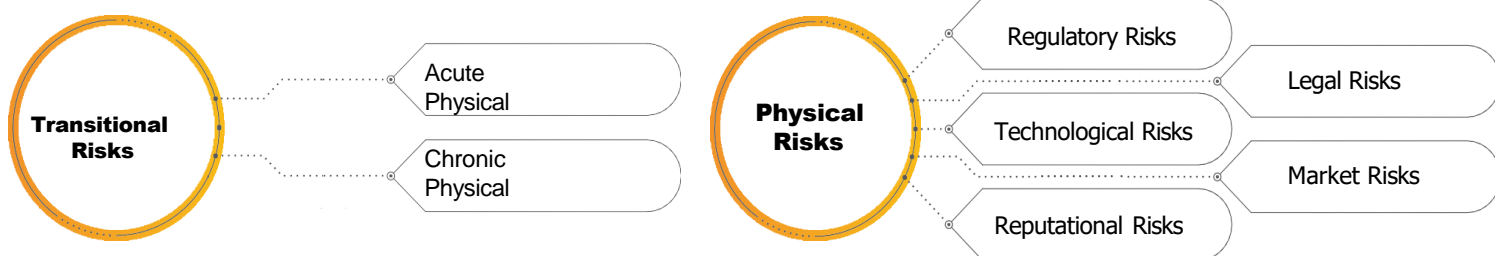
To provide recommendations to the Board on ESG topics.

To review the sustainability performance of the company against set targets and report it to the Board.

Our Risk Management Charter is centered on the seven pillars labeled under Sarna Management System (SMS), which are *Manufacturing, Expansion, People, Strategy, Development, Governance* and *Commercial*. Our risk management approach is in compliance with the legal requirements as provided by Regulation 21 of SEBI (LODR) Regulation 2015. Our business strategy is well educated of risks and opportunities posed by various external and internal factors for each pillar. The Board directly keeps a plaid on the risk management process. The Board has formed the **Risk Management Committee**, headed by CMD, The Board directly keeps a check on the risk management process. The Board has formed the Risk Management Committee, headed by CMD, for monitoring and reviewing identified risks. Chief Financial Officer (CFO) and Chief Manufacturing Officer (CMO) are executive members of the Committee. The CMO is directly responsible for managing ESG issues; it has enabled us in integrating ESG risks into our Risk Management Charter. The Risk Committee is responsible for the identification, prioritization, and development of mitigation strategies for various risks that affect our business. The committee has been entrusted with framing, implementing, and reviewing Risk Management Policy. Climate Change Risk. We have set up an integrated risk management system to ensure the sustainability of the business through timely identification, assessment and mitigation of risks. We are mindful of the fact that our understanding of climate change is still evolving and there may be certain phenomena that are still not clearly and completely understood. Cognizant of such limitations, we have adopted a precautionary approach towards identification and management of climate change risks. We have developed a comprehensive risk register by systematically identifying risks and opportunities posed by climate change that impact our organization. We priorities the identified risks based on time horizon and substantive financial and reputation impacts. Substantive financial impact has been defined as an impact that comprises either one or more of the following:

- » Risks that have the potential to cause losses of more than INR 1,000 million or 2% of the gross revenue of the organization in the medium-long term.
- » Risks that have the potential to cause erosion of contribution by more than INR 2.5 million or 0.2 % in the medium-long term The substantive social and reputational impact has been defined as follows:
  - » Negative coverage in mainstream and/or social media
  - » Community protests
  - » Loss of confidence of stakeholders

### Robust Risk Management Governance



## Climate Scenario Analysis & Human Rights Policy

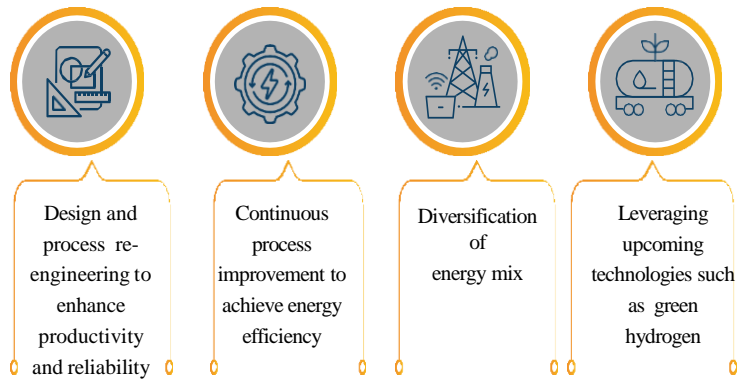
We have undertaken qualitative and quantitative scenario analysis to plan our decarbonization journey. Various scenarios considered by us are:

- » IPCC's RCP 4.5 Scenario: This is the most likely business as usual scenario.
- » IEA's 1.5 DS: It is also known as Net-zero Emission Pathway. It describes a pathway for the global energy sector to achieve net zero CO2 emissions by 2050.
- » IEA's WB2DS: It is also known as the Sustainable Development Scenario (SDS), it represents a gateway to the outcomes targeted by the Paris Agreement.
- » Stated Policy Scenario: It reflects current policy settings based on a sector-by-sector assessment of the specific policies that are in place.
- » Announced Pledge Scenario: This scenario is based on Nationally Determined Contributions (NDCs).

IPCC's Assessment Report has detailed out probabilities of various acute and chronic physical risks under RCP 4.5 scenario. Being mindful of the fact that it is most likely the baseline scenario, we have modelled our physical risk projections based on RCP 4.5 scenario. IEA's Net-zero emission pathway describes energy transition, costs of technology, and other energy-related transitional parameters in detail. This analysis has enabled us to analyze projected energy demand, conduct a cost-benefit analysis, and develop an energy transition roadmap. We have considered the year 2050 for scenario analysis. We have projected our GHG emissions for a period of 15 years and plan to develop a roadmap to achieve net-zero emissions under WB2DS. Strategic Implications Based on the above-mentioned scenario analysis, we understand that the demand for energy is going to increase due to an increase in production to satisfy the market demand. The most important strategic levers to decarbonize our operations shall be as follows: We are in the process of developing SBTi roadmap for which projections have been identified and developed.

### Zero Tolerance:

A Safe Workplace Against Sexual Harassment Our Prevention of Sexual Harassment (POSH) Policy is accessible to all employees, including permanent employees/workers, employees/workers on probation, trainees, apprentices, contract workers, visitors, vendors, and any person visiting SCPL. We have zero tolerance for sexual harassment and swiftly investigate all complaints. Training is mandatory, and we have a dedicated Internal Complaints Committee to handle any issues. No sexual harassment cases were reported during the reporting period.



### Stakeholder Engagement and Materiality Assessment

#### Our aspiration to lead the dialogue with stakeholders

At Sarna chemical, we believe our ability to respond and consistent engagement with key stakeholders is a step-up to lead the dialogue with stakeholders beyond compliance. We manifest our aspiration to undertake a collaborative approach with our stakeholders and conduct an open dialogue to understand their needs and expectations through a robust stakeholder engagement management. Listening and responding to stakeholder's needs is a vital element of our sustainability strategies. The feedback we receive further assists us in identifying ESG and business-related challenges, thereby adopting necessary mitigation strategies for sustainable growth through business resilience.

#### Human Rights and Labor Practices

Guided by international standards and the Voluntary Principles Initiative, we prioritize human rights across our value chain and new relations. Our People Policy and HR Code Manuals reflect our commitment to respect and dignity for all, without discrimination. We ensure no child or forced labor in our boundary or supply chain. Harassment-free workplaces and employee rights are protected, including the freedom to join trade unions. Human rights assessments cover operations and value chain partners. Extensive training and a Vigil Mechanism ensure a safe and respectful work environment. Our CHRO, deputed as Ethics Officer, oversees investigations and addresses human rights concerns on priority.

During the reporting period, SCPL had Zero reported violations of human rights concerning indigenous people, Zero cases of child or forced labor within our boundary, and zero discrimination instances. At our manufacturing site at Vapi, a significant portion of eligible employees are covered by a Collective Bargaining Agreement. At SCPL upholds the rights of its employees and workers to form and join trade unions, engage in negotiations and participate in collective bargaining under applicable laws and regulations. We are committed to respecting the rights of workers to form or join a trade union without fear of any form of intimidation or retaliation, as stipulated by the law. As per the regulatory requirement we have constituted works committees with equal number of representation from workers and members representing employers. The work committee are instrumental tools for workers to represent their queries and concerns to the management



## Contractor Safety Audit & Scorecard

### Contractor Safety Audit & Score Card

With an objective to maintain safety at workplace by identifying risks and mitigating hazards we at SCPL, carry out periodic safety audits to ensure regular improvement in the Safety Management System at the project site.

The site audits and reviews at SCPL are intended to focus on the following:

- To encourage the line managers to demonstrate their commitment to safety and environment through leading by example
- To have a structured discussion around safety and environmental issues with frontline staff & workers
- To increase staff & contractor worker engagement, thereby developing a culture of open communication
- To establish a team to conduct an audit, ensuring an unbiased view of our construction field activities from a safety and environment perspective

The contractor audits are conducted on a quarterly basis for each contractor with an average manpower of more than 30 and the audit score is calculated on a percentage basis.

#### Focus areas of audit

- Permit to work
- Fire protection and means of escape
- Hazardous substance/waste handling
- Electrical installations
- Temperature conditions
- Noise and lighting

After completion of the audit, the non-compliance/non-conformities are shared with the concerned contractor seeking their action plan & target dates for completion of the respective non-conformities. During the reporting period, we achieved an average of 82.44% of compliance on the contractor safety audits conducted across the groups.

### Waste Heat Recovery System

We have conceptualized and implemented several waste heat recovery projects to improve our operational efficiencies. Installation of Waste heat recovery boilers at Vapi and Jhagadia locations to generate steam for process heating and power generation are some key projects that we have undertaken under this endeavor. Furthermore, we are investing INR 150 Cr. in the debottlenecking of a waste heat recovery boiler at Vapi to maximize the steam generation, which will reduce our

### Process Safety Initiatives

Daily Process Deviation Monitoring – enables our supervisors to promptly recognize and resolve any concerns, guaranteeing that the procedure stays compliant and Effective. Interlock Integrity Assurance – By rigorously testing, verifying, and monitoring the functionality of our interlock systems, we ensure reliable and fail-safe operations, minimizing the risk of accidents and protecting both our employees and assets. Chlorine Handling System Enhancement Chemical interaction matrix is developed as part of our hazard identification process as it represents concisely the possible hazardous interactions between chemicals present in a plant and between chemicals and construction materials

### Our commitment to environment

To protect the environment, we work to improve energy efficiency, diversify our sources of energy, water recycling and reuse, handle materials and waste responsibly, and make efficient use of resources. These initiatives help us not only achieve operational excellence but also reduce our impact on the environment. We are continuously working to enhance our environmental performance and endeavour to communicate our progress in a transparent manner. To manage our emissions and discharge, protect nature, and reduce water consumption and impact on water resources, we have adopted external standards and principles developed by the Global Reporting Initiative (GRI), Task Force on Climate-related Financial Disclosures (TCFD), United Nations Global Compact (UNGC), and Sustainable Development Goals (SDGs).

SCPL is committed towards the protection of the environment, thereby ensuring a sustainable future of the planet. We exhibit our commitment to environmental responsibility by reducing the carbon footprint from our products, implementing responsible business practices, and supporting our wider value chain in working toward circularity sustainability.

Our major energy sources include coal, diesel, natural gas, grid electricity, and purchased steam. In addition to these, we use energy generated from waste heat and process systems. We understand that diversification of energy-mix is one of the crucial levers of decarbonization. To minimize the carbon intensity of our operations, we have developed near-term plans to minimize coal consumption by using coal-bio-briquette mixture in coal-based boilers with bio-briquette and installing natural gas-based boilers wherever feasible. Furthermore, in this endeavour, we have also developed and adopted plans to increase the share of renewable energy in our energy mix through on-site generation and an open access model.

2

### Energy Efficiencies

At SCPL's, we have an Energy conservation cell at each location to conceptualize and implement energy saving initiatives and reduce carbon footprint. We have invited all the employees to provide ideas and suggestions on potential energy saving projects. We have also encouraged them to conceptualize and implement quality circle projects on energy saving. We have adopted three pronged strategy towards energy conservation:

### Our Safety Performance

Our safety performance is monitored through the Aarti Management System (AMS), prepared monthly, comprising various leading and lagging indicators. We conduct periodic reviews of our HSE performance, and our senior leadership team discusses the outcomes from this review during the Apex Sustainability Council. During the reporting year, we received zero complaints from employees and workers on working conditions, health and safety practices. 100% of our plants and offices were assessed for working conditions, health and safety practices.

Smoke and Fire Detection Systems and Deluge Systems in Warehouses – enabling early detection, speeding up response to life-threatening incidents, and maximizing the protection of people and property. N<sub>2</sub> PADDING on Flammable Solvent Storages where the N<sub>2</sub> gas blanket helps to maintain constant inert conditions for the product in the container, increasing safety and the shelf life of the solvent in the tank





## Learning and development, Contract Workers Training, Training of Security Person

### Training of Contract Workers

We believe in thriving together. Hence, empowering contract workers is vital for the success of our business. In the reporting period, workers received 1200 manhours of training, each benefiting from 2.6 hours of skill-building.

### Training of Security Personnel

At SCPL, safety is our utmost priority. Security personnel receive comprehensive briefings on relevant policies, undergo emergency response and fire safety training and benefit from specialized role-based training. In the reporting period, they received 1700 manhours of training, averaging 3.2 hours per guard.

### Performance Management

Performance appraisal was carried out on time for all our eligible employees. We have a well-defined digitized structured performance management system. Line managers continuously engage with the repartee's to provide constructive feedback and guide them to grow professionally and personally. Each employee is provided with well defined goals and key performance indicators at the start of the appraisal cycle. An attempt is made to keep goals Specific, Measurable, Relevant, and Time-bound (SMART). Sustainability-related parameters are also a part of set KPIs for each level of employee. The performance incentive of mid and senior-level personnel is linked with the sustainability performance of the Company. 100% of our employees and workers are provided with performance and career development reviews. Around 1000 employees and workers were promoted or upgraded in FY 2022-23.

### Embracing Diversity and Equal Opportunity

We Aim to Set Up a Plant Fully Operated by Women At SCPL, we champion a diverse workforce that fosters creativity and innovation through varied perspectives and experiences. Our merit-based, fair, and transparent recruitment process shows our commitment to equality. We value knowledge, competencies, and cultural fit without discrimination based on age, sex, gender, race, color, origin, caste, religion, marital status, ethnic origin, disability, or sexual orientation. We embrace and celebrate workplace diversity while promoting inclusivity. Our initiatives, such as "Metamorphosis," foster transparent communication and bridges hierarchical gaps across levels. With a culture that emphasizes the absence of hierarchy, we maintain an open-door policy, ensuring easy accessibility to our leadership team. Our inclusive practices extend beyond our employees to encompass contract staff, family members, and the local community through various initiatives.

